

Hilltop



Tremithousa

Nestled in the scenic region of Pafos, Cyprus, Tremithousa Village offers an enchanting real estate experience, seamlessly blending traditional charm with modern convenience.

With the added allure of panoramic views of the Mediterranean Sea, Tremithousa is a peaceful retreat within easy reach of urban amenities. Residents can relish the village lifestyle while enjoying convenient access to the vibrant town of Pafos, just a short drive away. Additionally, the proximity to the azure waters of the Mediterranean Sea is a mere 5 KM away, allowing residents to easily indulge in coastal pleasures and seaside activities.

Furthermore, Tremithousa Village is well-connected to the convenience of travel, with Pafos International Airport a short drive away. This accessibility makes it an ideal choice for those seeking a harmonious balance between a tranquil village setting and the practicality of modern living.



Hilltop

This collection of 17 2-storey houses offers a range of 3 and 4-bedroom residences, each boasting 4 bathrooms, sprawling across large plots of up to 850 sq.m. The properties feature optional roof gardens and overflow swimming pools, adding a touch of luxury to the serene landscape.

The modern architectural approach blends the project seamlessly with the natural environment, creating spacious and efficient interior areas. The location is exceptional, providing unobstructed views of Pafos and the Mediterranean Sea from every single house. The village center is only 2 minutes away, offering convenience without compromising tranquility.

Whether you seek an investment opportunity or your private residence, "HILLTOP" is the ideal choice. Embrace a modern lifestyle that harmoniously integrates with the natural beauty of Cyprus, promising not just a home but an exclusive retreat with breathtaking views and easy access to village amenities.



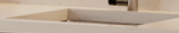
















MASTER PLAN

Τεμάχιο 183

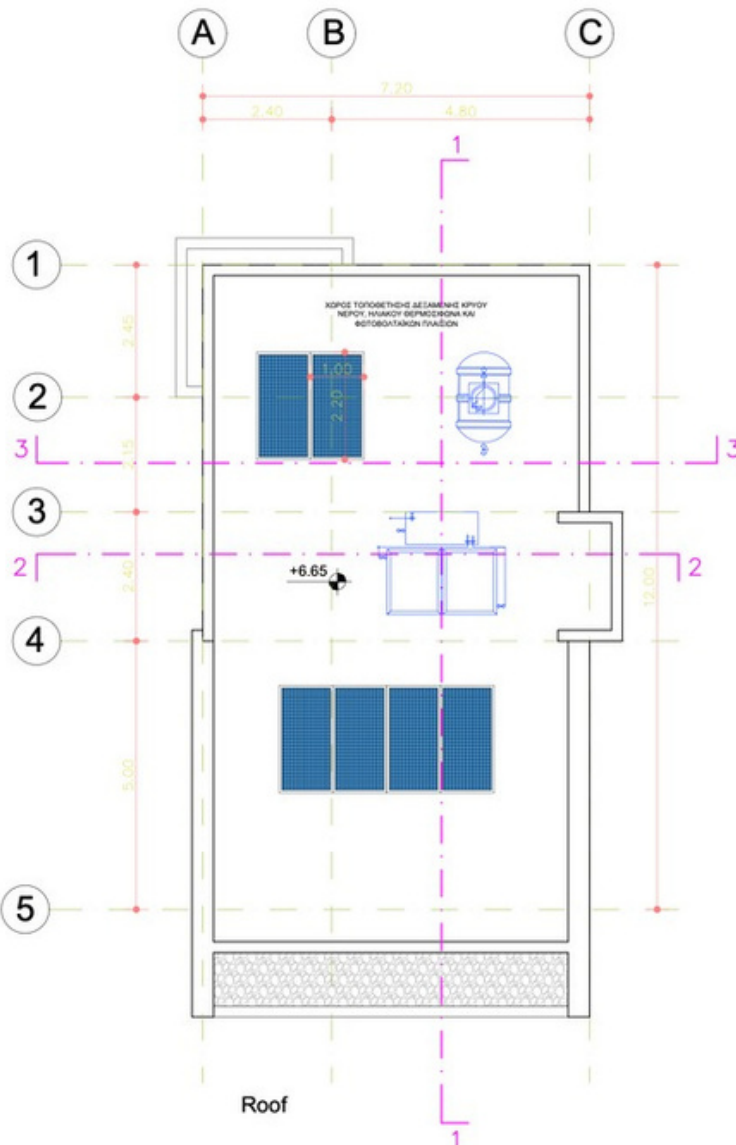
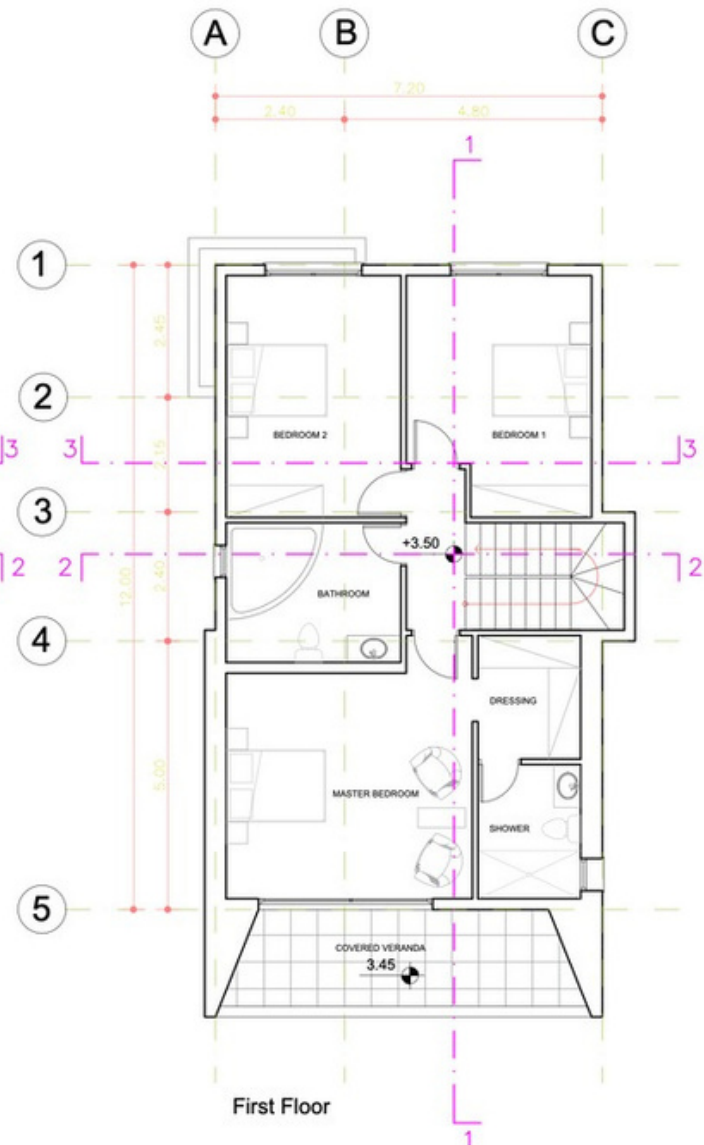
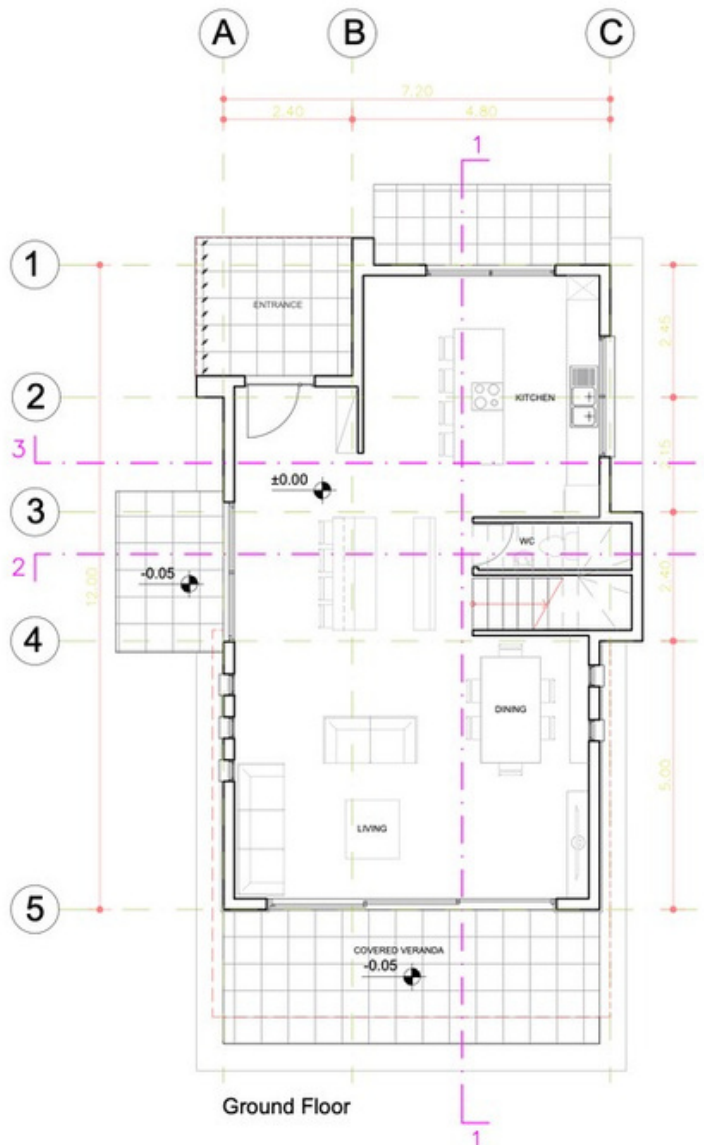


Τεμάχιο 71

ΔΗΜΟΣΙΟΣ ΔΡΟΜΟΣ

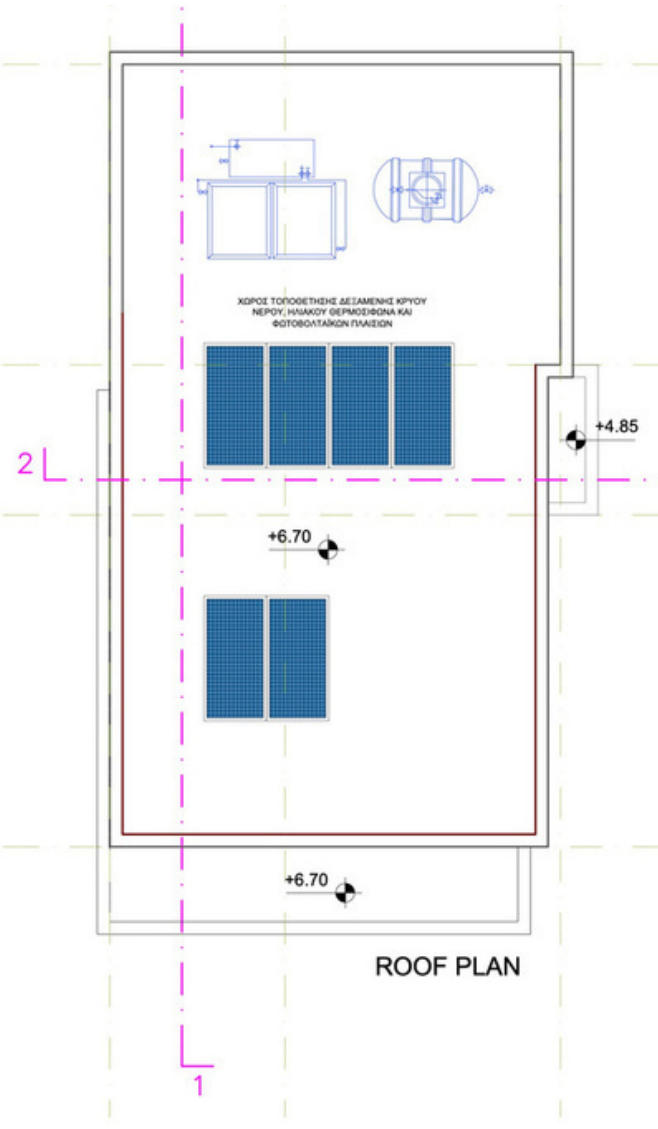
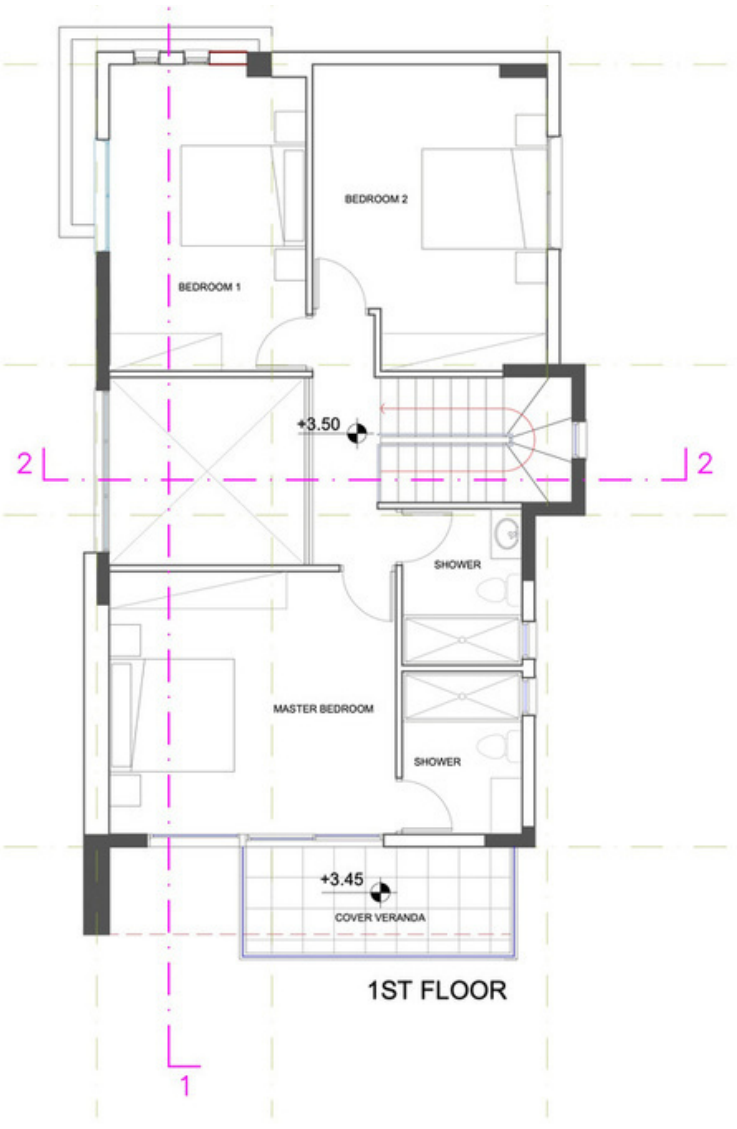
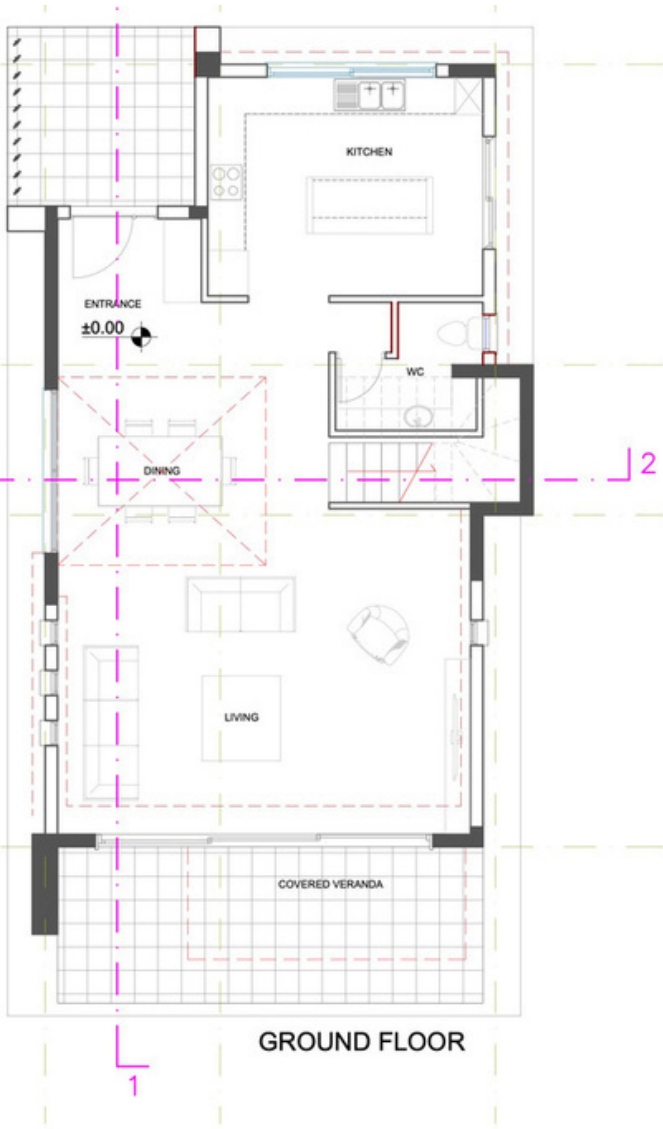
FLOOR PLANS

Houses 1, 4, 10, 12



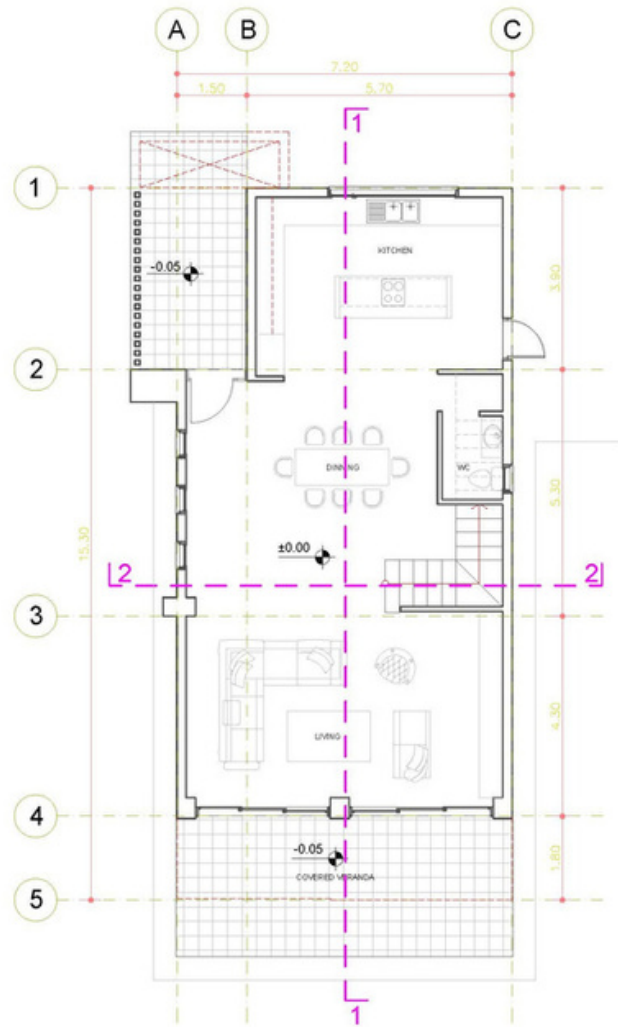
FLOOR PLANS

Houses 2, 8 (plus 6, 14 mirrored)

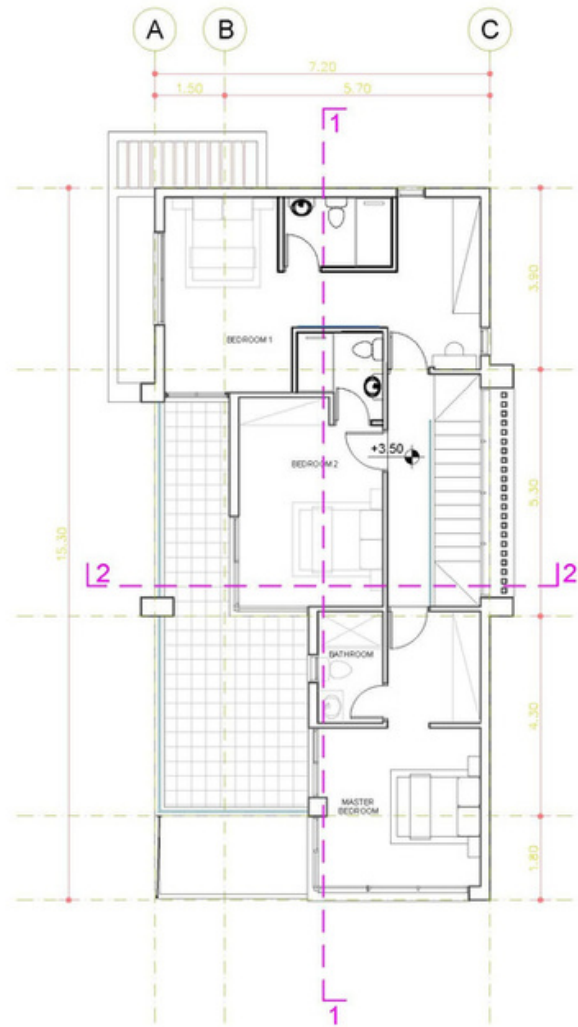


FLOOR PLANS

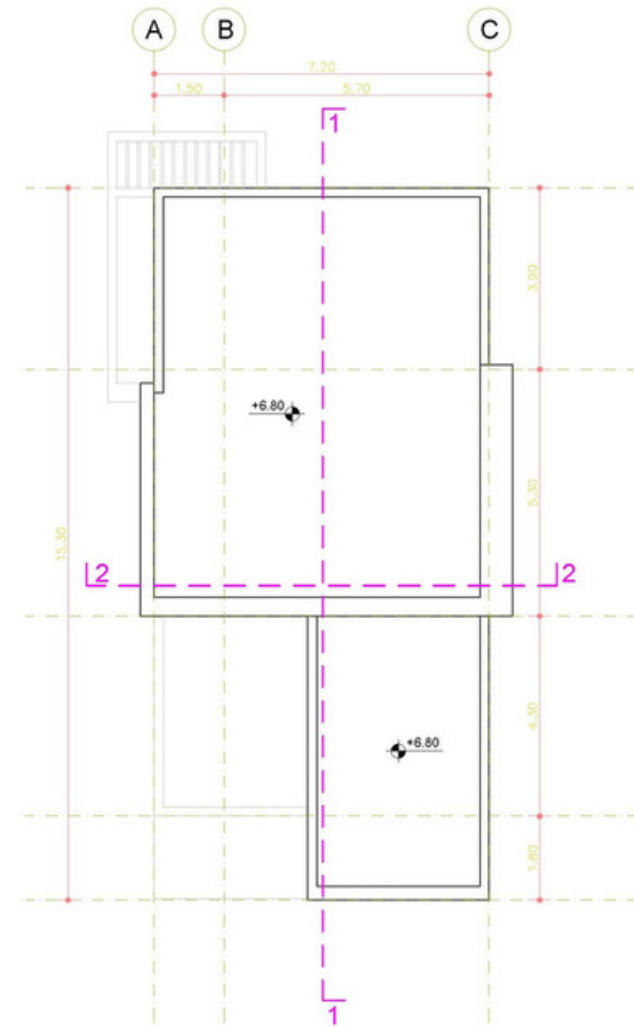
Houses 3, 5, 9, 11



GROUND FLOOR



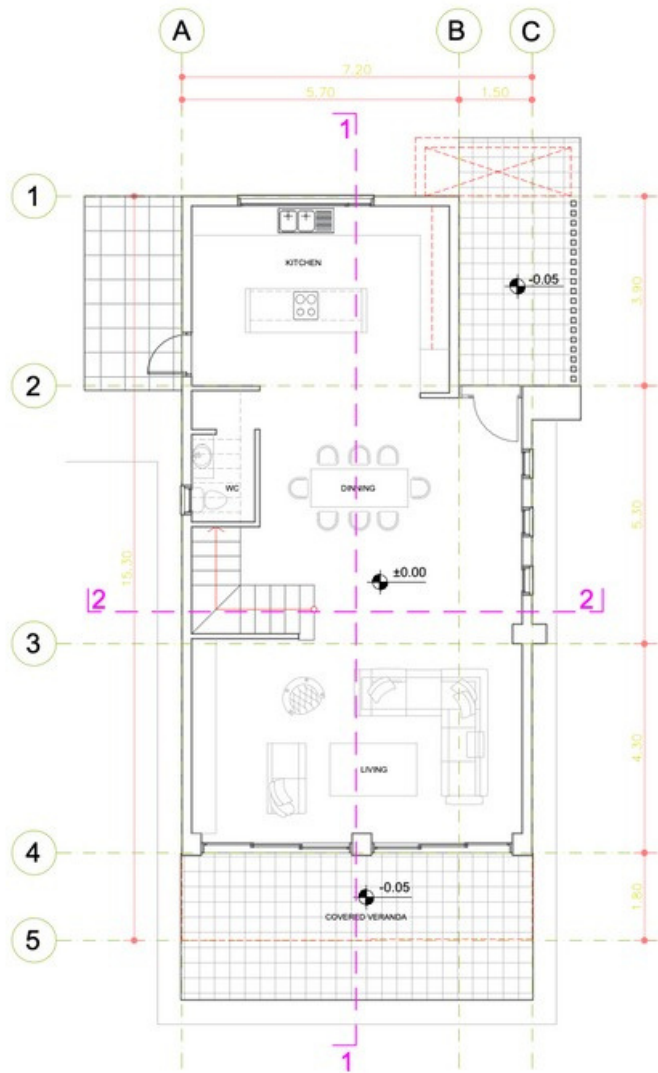
FIRST FLOOR



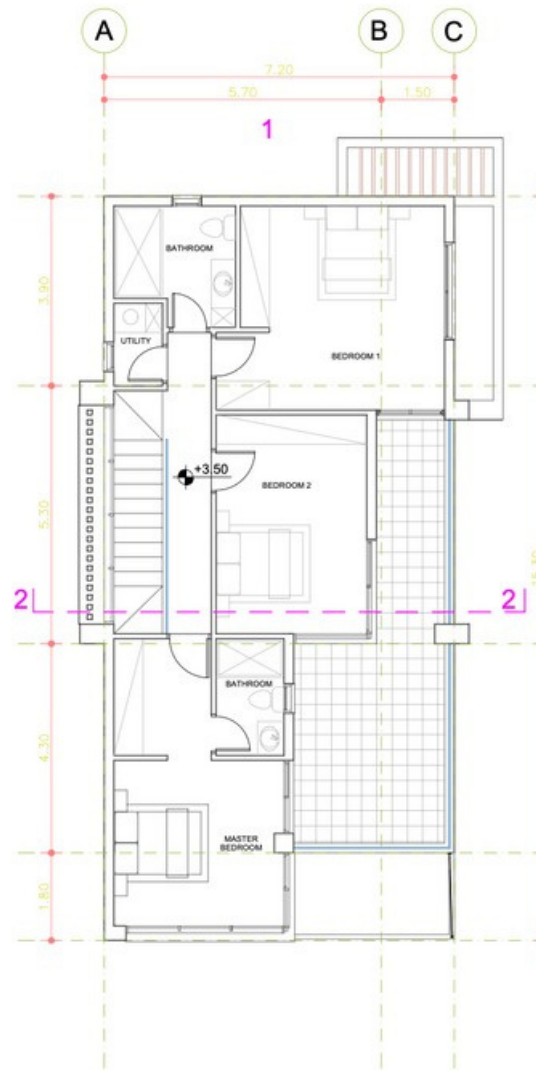
ROOF

FLOOR PLANS

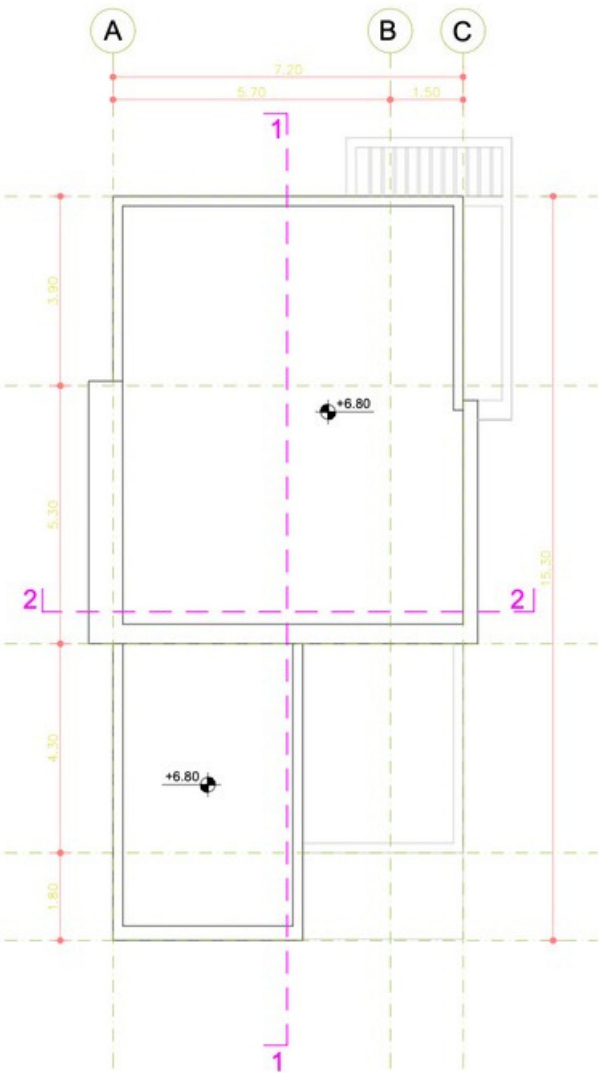
House 7



GROUND FLOOR



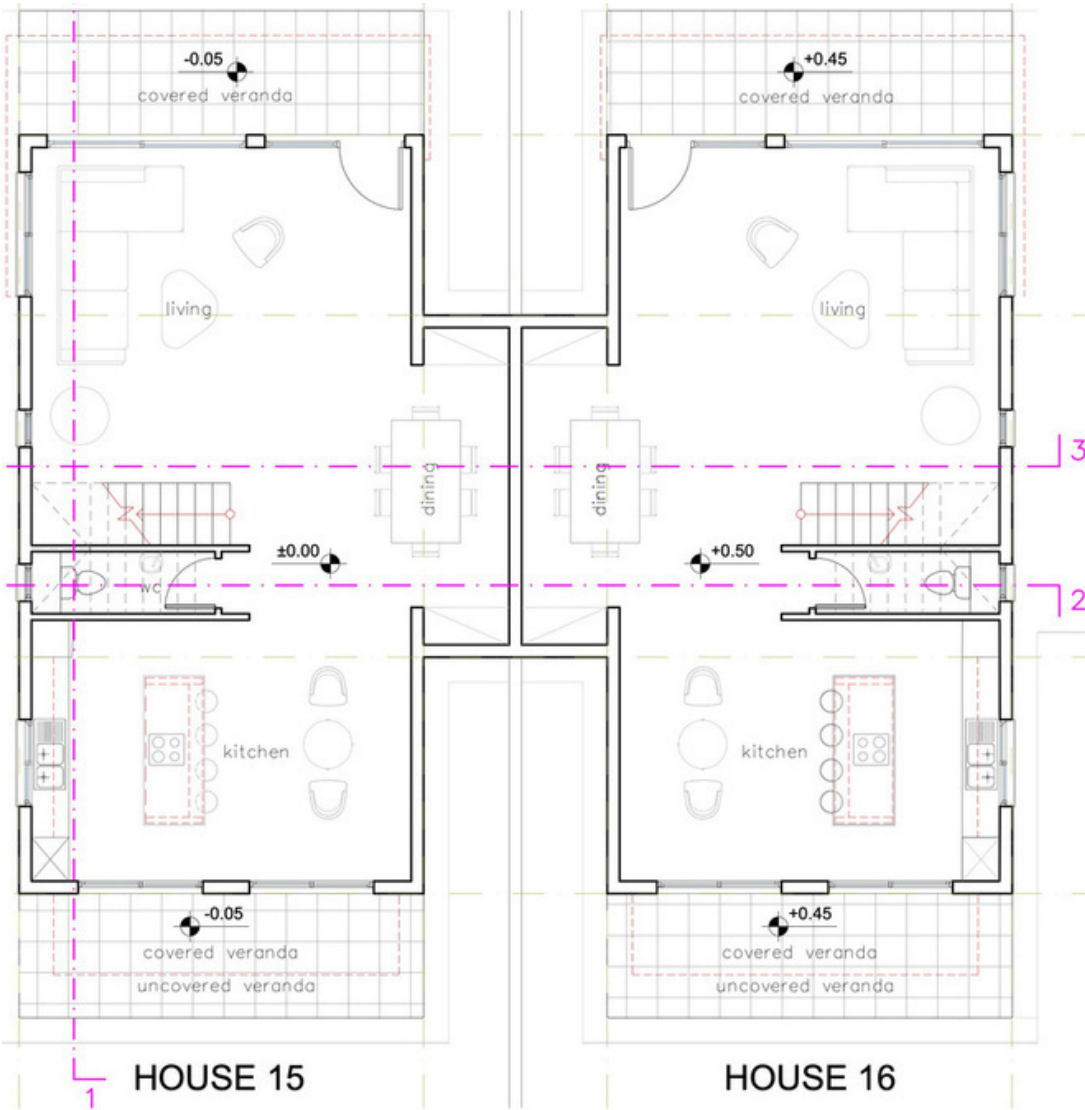
FIRST FLOOR



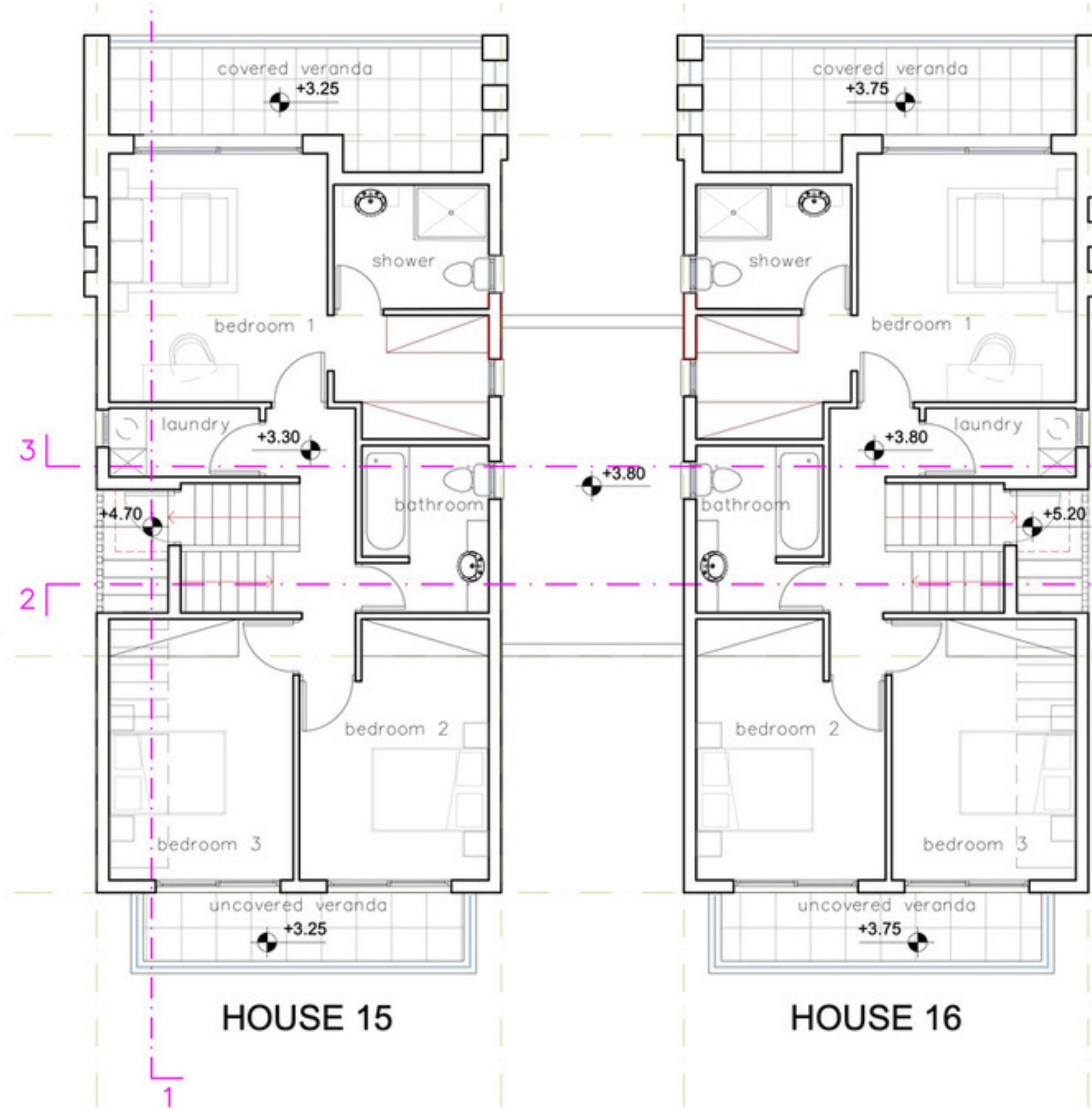
ROOF

FLOOR PLANS

Houses 15, 16, 17, 18

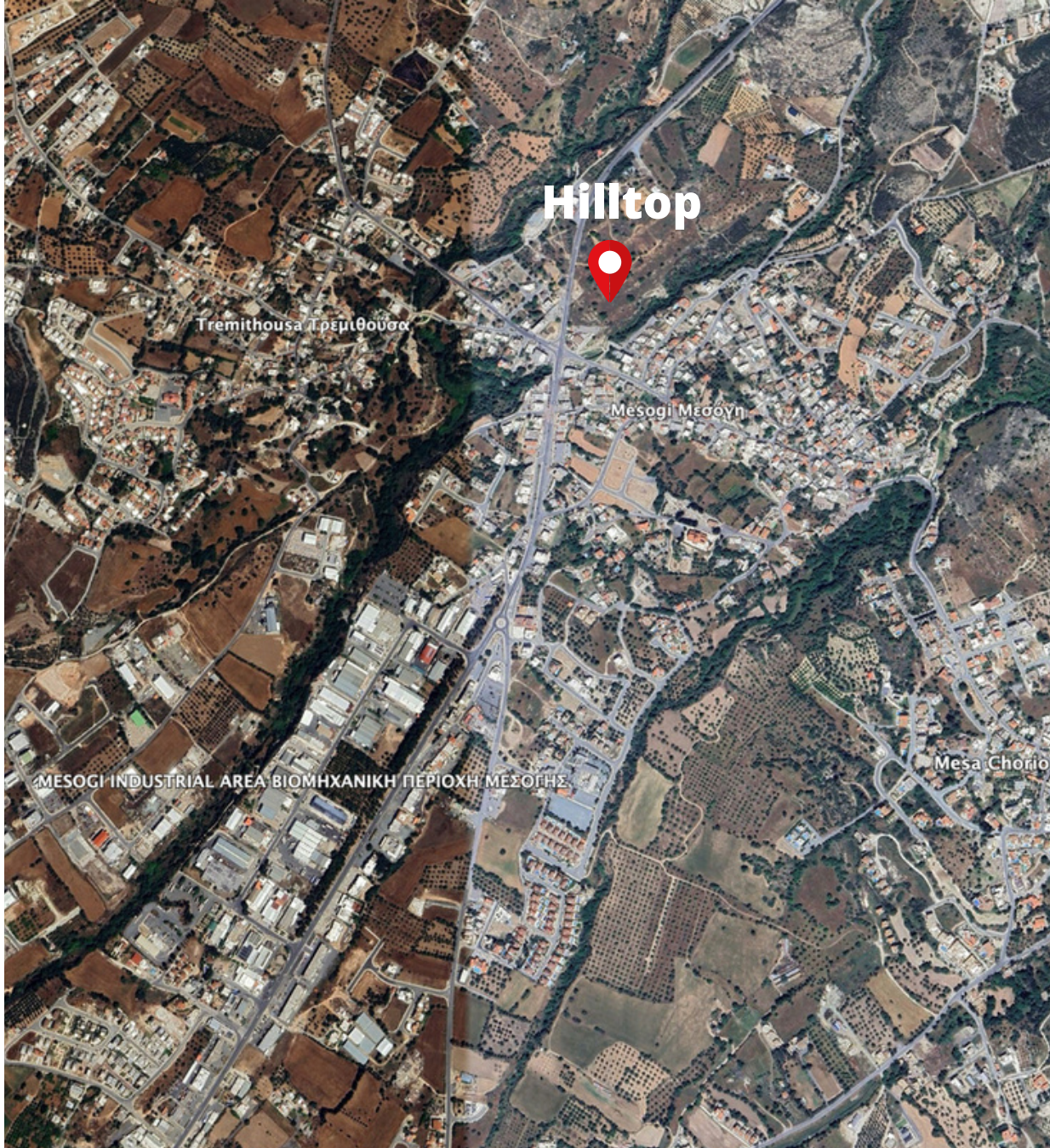


GROUND FLOOR



FIRST FLOOR

LOCATION



CITY CENTER
1KM



BEACH
5KM



AIRPORT

15KM

RESTAURANT

100 MTRS



SUPERMARKET
1KM



SCHOOL
1KM



GOLF
COURSE
5KM

Hilltop

SPECIFICATIONS

- *17 - 3 & 4 Bedroom Villas*
- *Energy efficiency class "A"*
- *Private overflowing swimming pool*
- *A/C split units and electrical appliances included*
- *Generous plots*
- *Detached properties*
- *Unobstructed Sea View*
- *Contemporary Architectural Design*
- *Upgraded thermal aluminium series*
- *Tailor made kitchen design*
- *Wide range of imported ceramic tiles and marbles*
- *Branded sanitary ware*
- *Provisions for central heating*

