

KONIA THEA



KONIA

Konia is a traditional village with an immense view, from where one can enjoy gazing all the way to the city of Pafos with ease as the village is located only a few kilometers away from Paphos Town city centre. Built upon a mountainside and at a beautiful venue, today it is a place that both locals and foreigners embrace. In this community some villas and new houses have started to pop up and - generally - the way of living has started to change in the once quiet place.

Konia has something special. It is a village inviting for those who seek rest, calmness, and serenity. The same absolute quietness and calmness also prevails during the night. You feel that your body is penetrated by a soft, refreshing breeze. You are able to enjoy a crystal clear sky filled with stars that emit their dim light towards you.

This unrivaled beauty and serenity, this unsurpassed harmony in light and color that you come across here, in the village's mountainside, is something rare. It is probably one of the calmest places in Cyprus



KONIA THEA

A luxury development consisting of just 2 uniquely designed villas, located in Konia, one of Pafos' most sought after areas for permanent living.

Each villa enjoys breath-taking unobstructed sea views and the most stunning sunsets over the water that Cyprus has to offer. The richly designed architecture blends exterior and interior spaces in harmony, creating a pleasant environment to enjoy the overflow swimming pool and the relaxing patio terraces.

The privacy the natural landscape plot offers and the spacious areas, designed in a way to maximise usable spaces, create a warm and envious living experience.

Located on the western suburbs of Pafos, at a quiet, peaceful, and upscale residential area, while only 500m from the highway connecting Pafos to Limassol and with all amenities a few minutes away, "Konias Thea" is the ideal option for a rare permanent living investment.



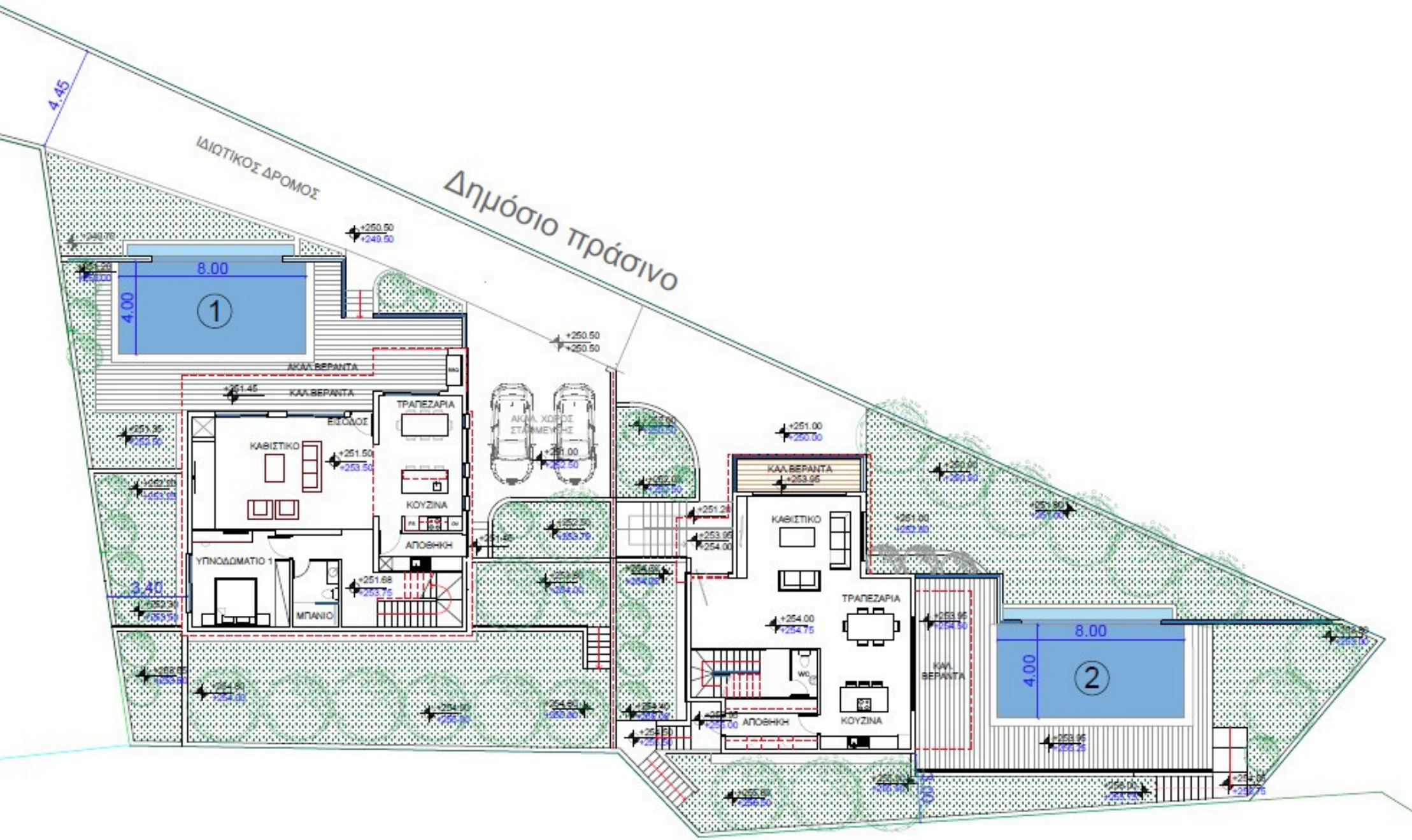






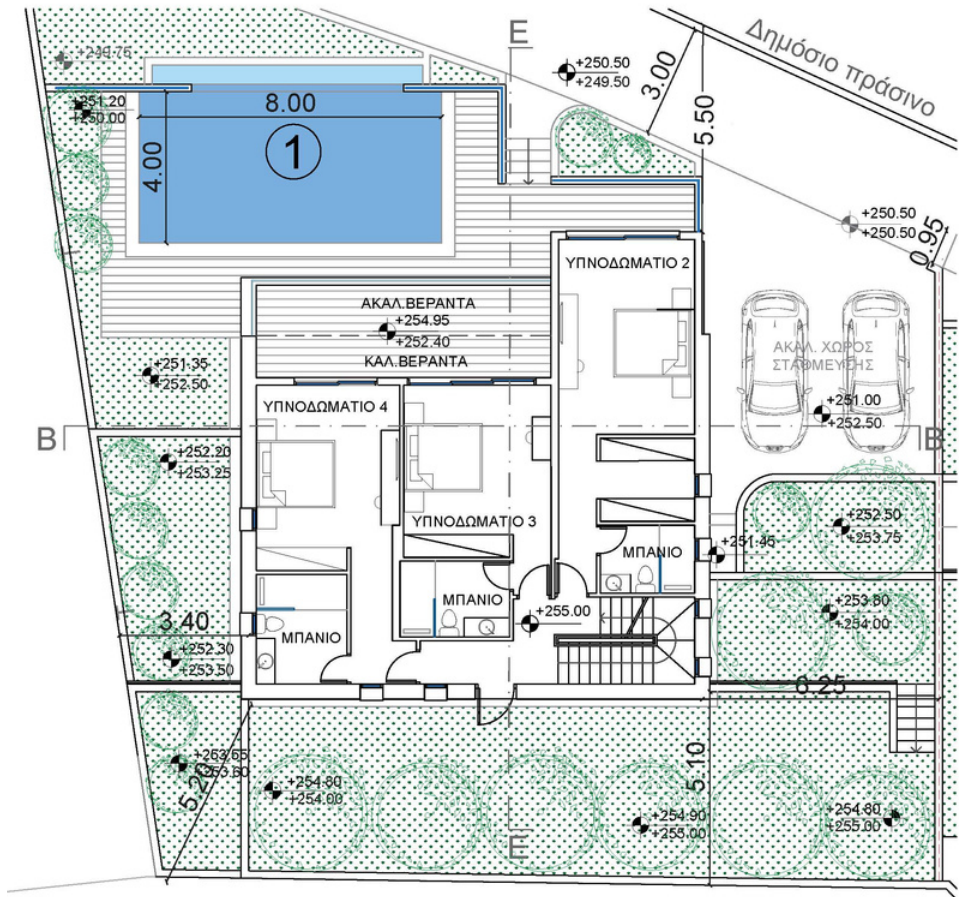
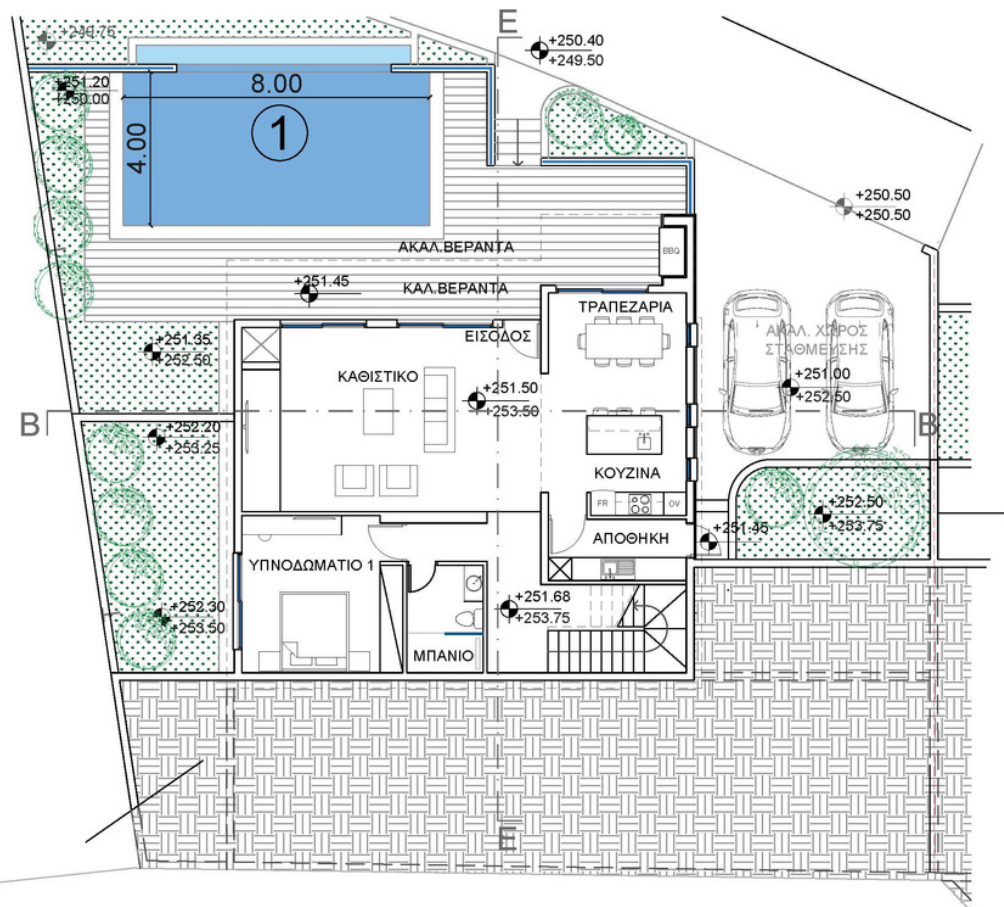


MASTER PLAN



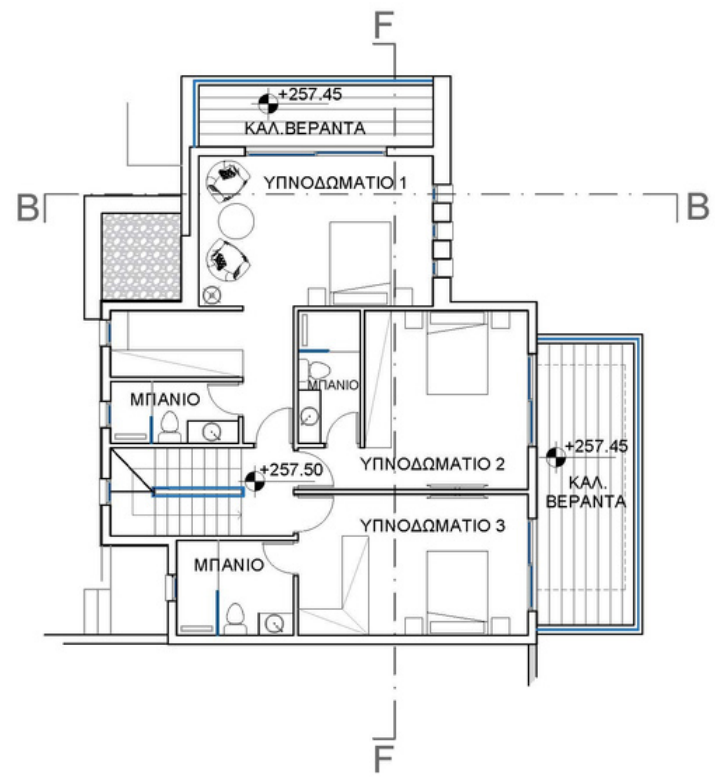
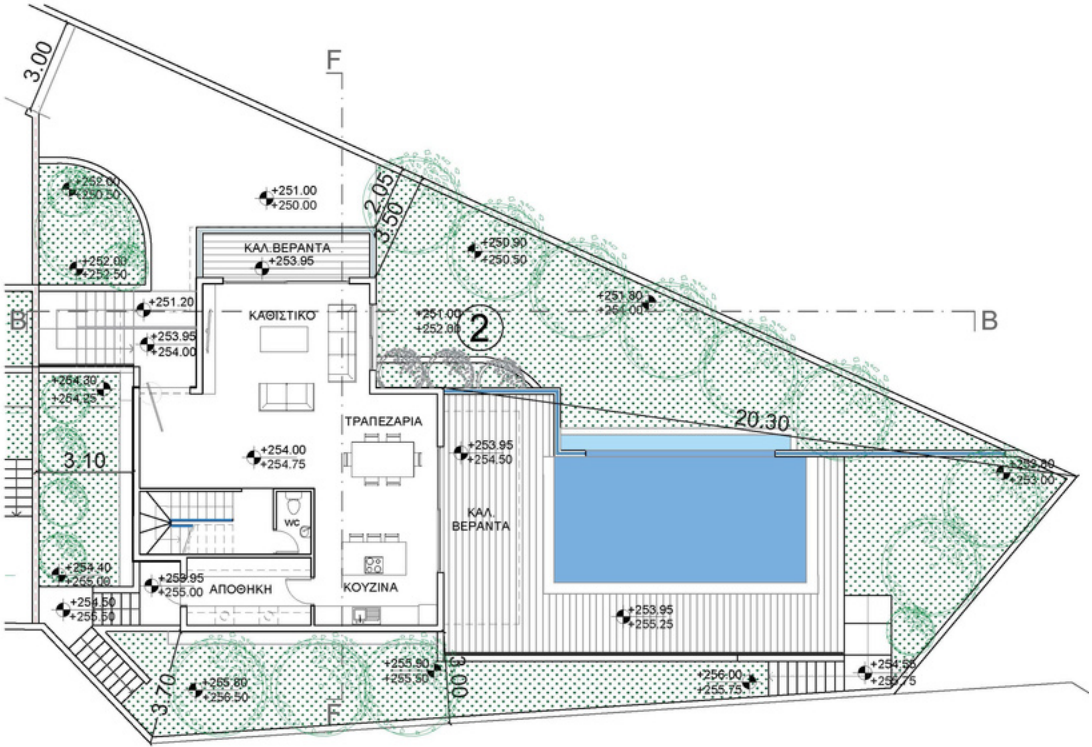
FLOOR PLAN

Villa 1

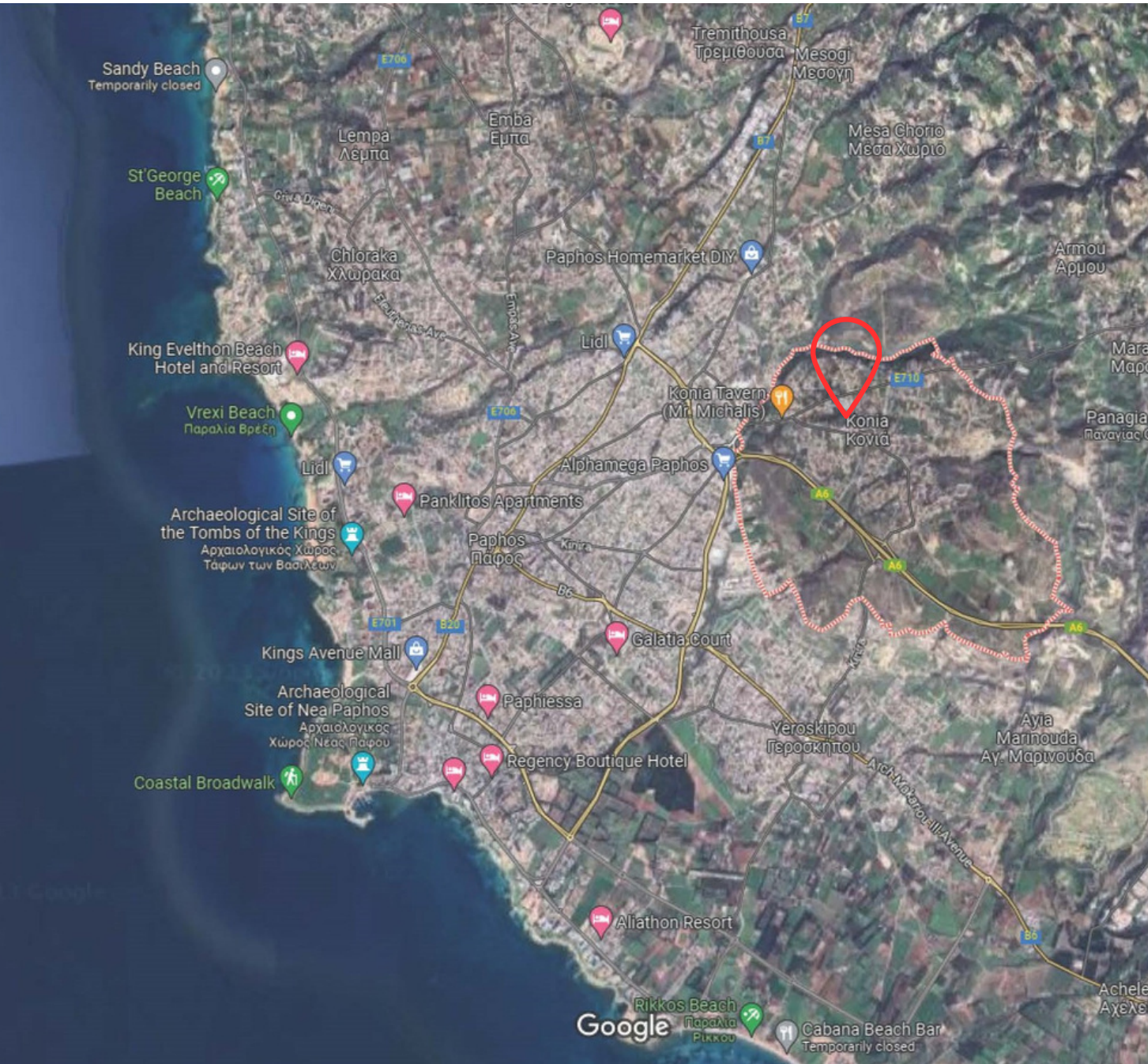


FLOOR PLAN

Villa 2



LOCATION



CITY CENTER
1KM



BEACH
5KM



AIRPORT
15KM



RESTAURANT
2KM



SUPERMARKET
5KM



SCHOOL
7KM



GOLF COURSE
10KM

KONIA THEA



SPECIFICATIONS

- *3- 4 Bedrooms*
- *Private overflow swimming pool*
- *Private roof garden*
- *Contemporary Architectural Design*
- *Upgraded thermal aluminium series*
- *Tailor made kitchen design*
- *Wide range of imported ceramic tiles and marbles*
- *Branded sanitary ware*
- *Underfloor heating and Concealed A/C*
- *Alarm, security and Intercom system*
- *Electric gates*
- *Energy efficiency class A*