

La Reina

# La Reina





# PAFOS

Set apart from the lower town and main tourist area, this historic old quarter offers a more laid-back vibe as well as several cultural attractions.

Although it is just 2 miles (3 kilometers) from the main seafront tourist area, Paphos City Center or Ktima as it is known locally, feels a world away. Take a stroll around this charming and laid-back part of town to see elegant, colonial-era constructions and the modern commercial center of town.

Ktima is the perfect antidote for people looking to escape the busier, livelier and more tourist-heavy district of Kato Paphos or Lower Paphos. Wander around the city center bars and traditional restaurants. Pause for a coffee in a café with a harbor view.

While you're here, browse the edible goods on offer at the municipal market. The "agora" as the locals call it is where Paphos residents go to shop for groceries.

With its many narrow lanes and its relatively small size, Paphos City Center is best explored on foot. If you don't want to walk uphill to get here, ride a local bus from the harbor instead.



# La Reina

"La Reina" consists of just 9 apartments, over three identical floors. There are two 1-bedroom and one 2-bedroom apartment on every floor, each with its allocated parking space on the ground floor.

The project is located in one the most popular areas among locals for living, in between the sought after area of Universal in Pafos, and Geroskipou village.

The proximity of the plot to all amenities, lasis Hospital and the touristic area, alongside the view to Pafos' picturesque seaside create an ideal environment for the residents of "La Reina".

At the same time, the popularity of Universal area for short-term rentals create higher rental yields opportunities, compared to other areas in Pafos.

With sea-side developments on Pafos' riviera enjoying higher rental yields and capital appreciation in the last years, "La Reina" is a great opportunity for both independent buyers and investors.















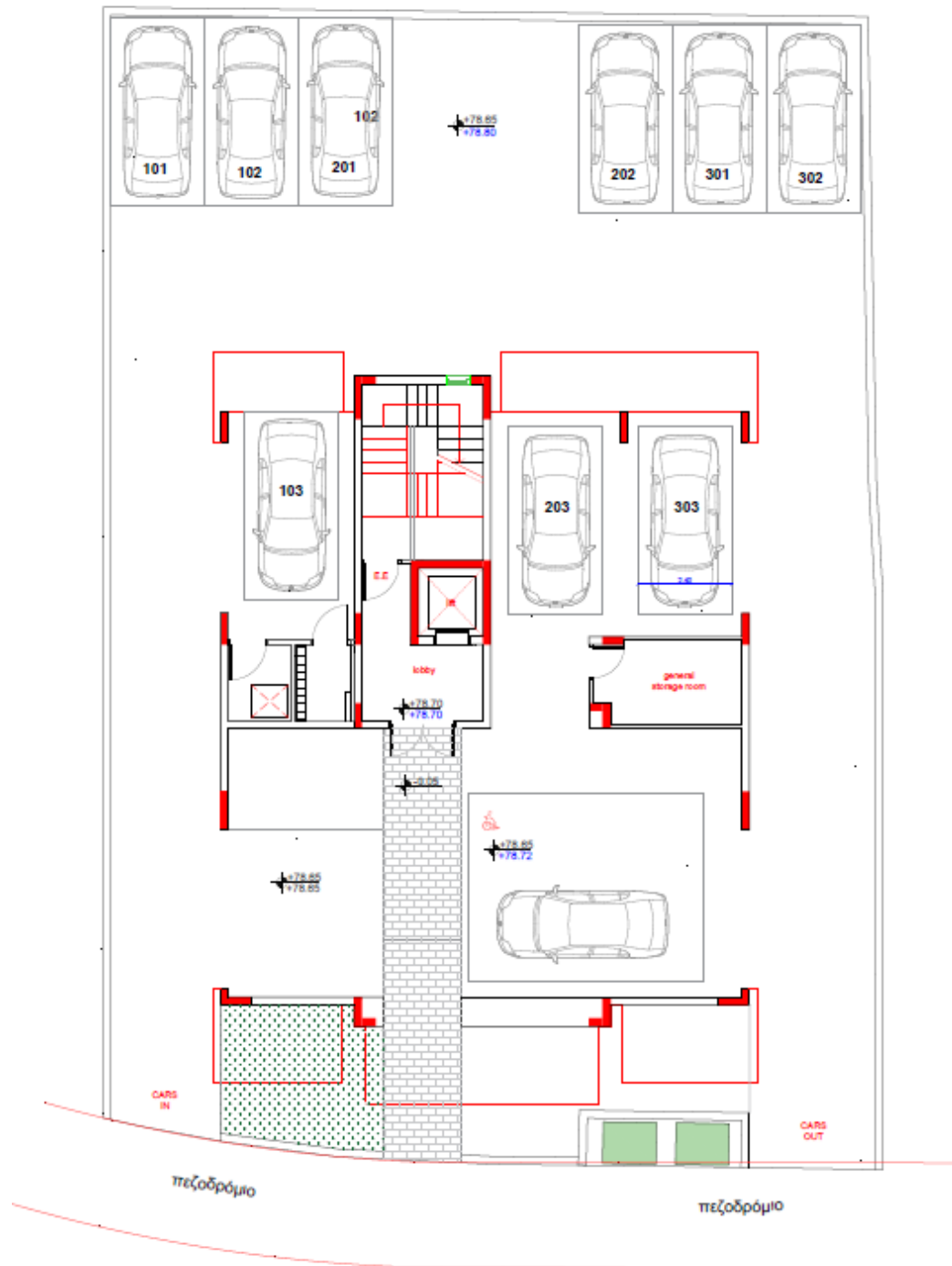








# Master plan





# FLOOR PLAN



# Location



CITY CENTER  
2KM



BEACH  
2 KM



AIRPORT  
20 KM



RESTAURANT  
100m



SUPERMARKET  
100m



SCHOOL  
400m



GOLF COURSE  
10KM



# La Reina



## SPECIFICATIONS

- *1-Bedroom and 2-Bedroom flats*
- *Contemporary Architectural Design*
- *Upgraded thermal aluminium series*
- *Tailor made kitchen design*
- *Wide range of imported ceramic tiles*
- *Branded sanitary ware*
- *Provisions for central heating*
- *Energy saving designed property*
- *Energy Efficiency Class A*