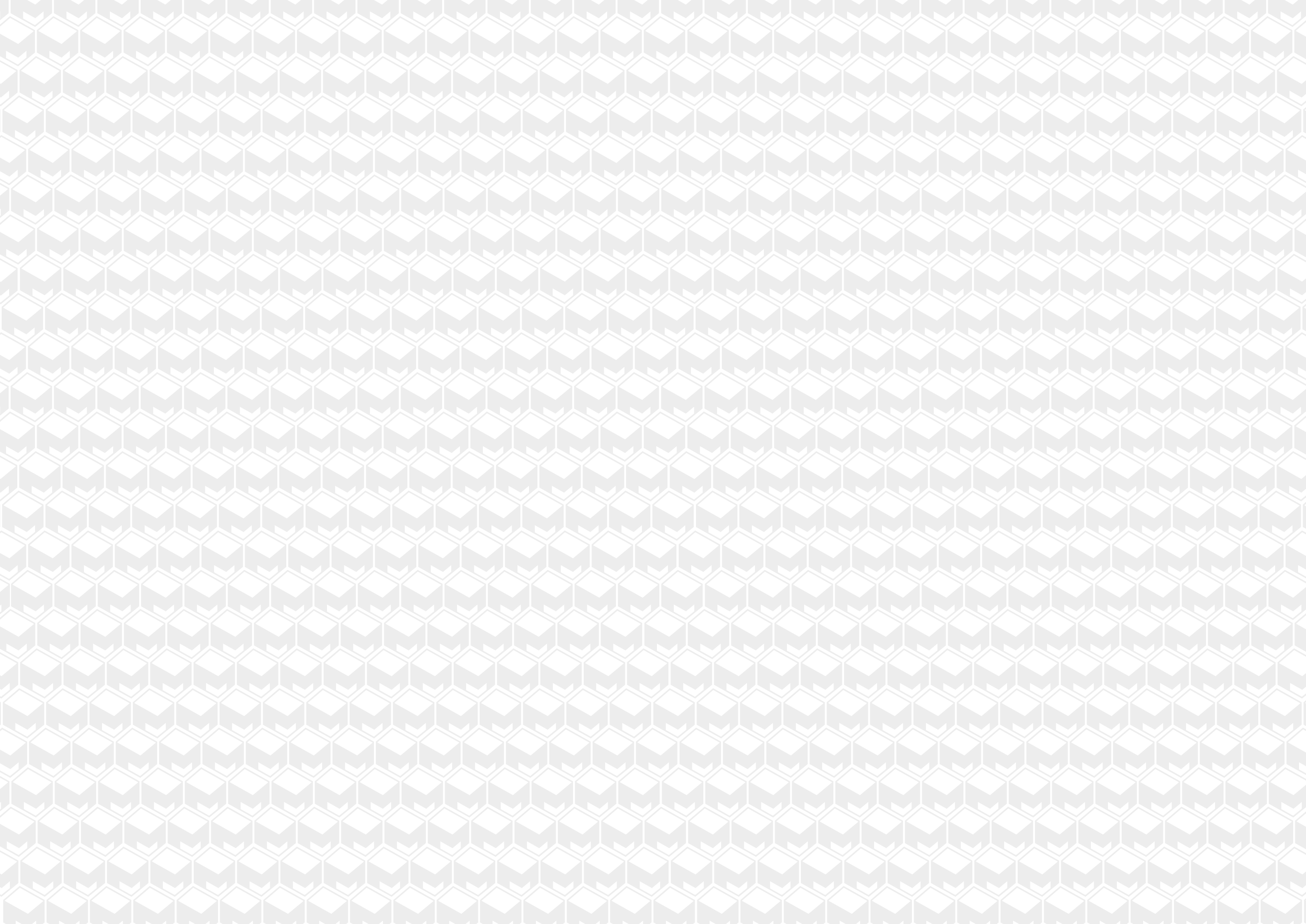




PANORAMA
APARTMENTS



PANORAMA
APARTMENTS

Your sea-view sanctuary



THE PROJECT

Introducing Panorama Apartments, an exclusive gated community located in the developing area of lower Geroskipou, Cyprus. With its contemporary style and luxurious interiors, this residential complex offers a truly exceptional living experience. The community comprises five apartment blocks, thoughtfully designed to maximize the breathtaking panoramic sea views that can be enjoyed from nearly every unit.

The apartments within Panorama Apartments are a testament to sophistication and elegance, boasting sleek and modern architectural designs. Each unit is meticulously crafted with spacious layouts, allowing for an abundance of natural light to flood the living spaces. The interiors are tastefully appointed with high-quality finishes and fixtures, creating an open and airy ambiance.

With its unparalleled combination of luxury, convenience, and stunning sea views, Panorama Apartments is an extraordinary investment opportunity that should not be missed. Experience the epitome of quality and modern living in this exclusive residential community, where every detail has been meticulously curated to offer a truly exceptional and exclusive lifestyle.





ABOUT PAFOS



The town of Pafos, located at the western end of the island, is considered the jewel of Cyprus. The mild climate, vibrant atmosphere, the variety seen in the landscape, and the historic sites that define the region, form the irresistible attraction of Pafos.

The city of Pafos has a remarkable history which can be traced back 2300 years. Throughout the centuries, the city has built a spectacular cultural heritage and has played a significant part in the development and history of Cyprus. In ancient times it was the capital of Cyprus for 600 years and its archaeological legacy is such that UNESCO has the whole town on its World Cultural Heritage list and, in recognition of this, Pafos was awarded the European Capital of Culture 2017. In 2023 Pafos was awarded Capital of Smart Tourism.



GEROSKIPOU

Geroskipou, a captivating area within the vibrant city of Paphos, Cyprus, beckons you to embrace a remarkable lifestyle surrounded by natural splendor.

This picturesque location seamlessly blends tradition with modern convenience, ensuring a truly enriching living experience. Geroskipou offers a wide range of essential amenities, esteemed educational institutions, and an array of delectable dining options to satisfy every palate.

Discover a mesmerizing panorama of the Mediterranean Sea from this idyllic retreat, where breathtaking views unfold before your eyes. Immerse yourself in the captivating history, embrace the welcoming community, and surrender to the irresistible allure of Geroskipou.



KEY DISTANCES



Blue Flag Beach
5 min | 2.7km



Private Hospital
8 min | 3.5km



Town Centre
10 min | 4.3km



Highway
7 min | 4.9km



Pafos Harbour & Promenade
15 min | 12.4km



General Hospital
10 min | 5.7km



Grocery Store
1 min | 0.25km



International Airport
11 min | 15km



International Private School
12 min | 7.4km



Golf Course
7 min | 4.2km





OVERVIEW

Residents of Panorama Apartments have access to an array of state-of-the-art amenities. The community features round-the-clock security, ensuring a safe and secure environment for all residents. There is a fully equipped gym, allowing residents to maintain an active lifestyle without leaving the premises. A large communal pool provides a refreshing oasis, while changing rooms offer convenience and comfort.

The development offers a variety of apartment configurations to suit different preferences and lifestyles. Whether you seek a cozy one-bedroom retreat, a spacious two-bedroom haven, or a lavish three-bedroom residence, you will find the perfect home within Panorama Apartments. Each unit comes complete with a modern kitchen, luxurious bathrooms, ample storage space, and meticulous attention to detail.

Panorama Apartments also provides ample parking space for both residents and guests, ensuring convenience and ease of access. The well-manicured gardens create a serene and welcoming atmosphere, further enhancing the overall appeal of the community. Situated with direct access to a main road, Panorama Apartments offers excellent connectivity to other areas of the city and the airport, making it ideal for those seeking a balance between accessibility and tranquility. The developing area of lower Geroskipou presents exciting opportunities for growth and development, with modern infrastructure and social amenities being established.

SPECIAL FEATURES

INCLUDES



VRV technology

Thermal Aluminium Windows

Gated Community

Garden-access apartments

Roof-top access penthouses

Solar-powered water boiler

Photovoltaic provisions

Private parking

Communal gym and changing rooms

Communal pool

Customizable interiors

Custom wardrobes and cabinets

Tiled floors in all area

Laminated floors in all bedrooms

Energy-efficient design

Close proximity to facilities & amenities

Quiet area

Sea-view

Allocated storage rooms

Underfloor heating







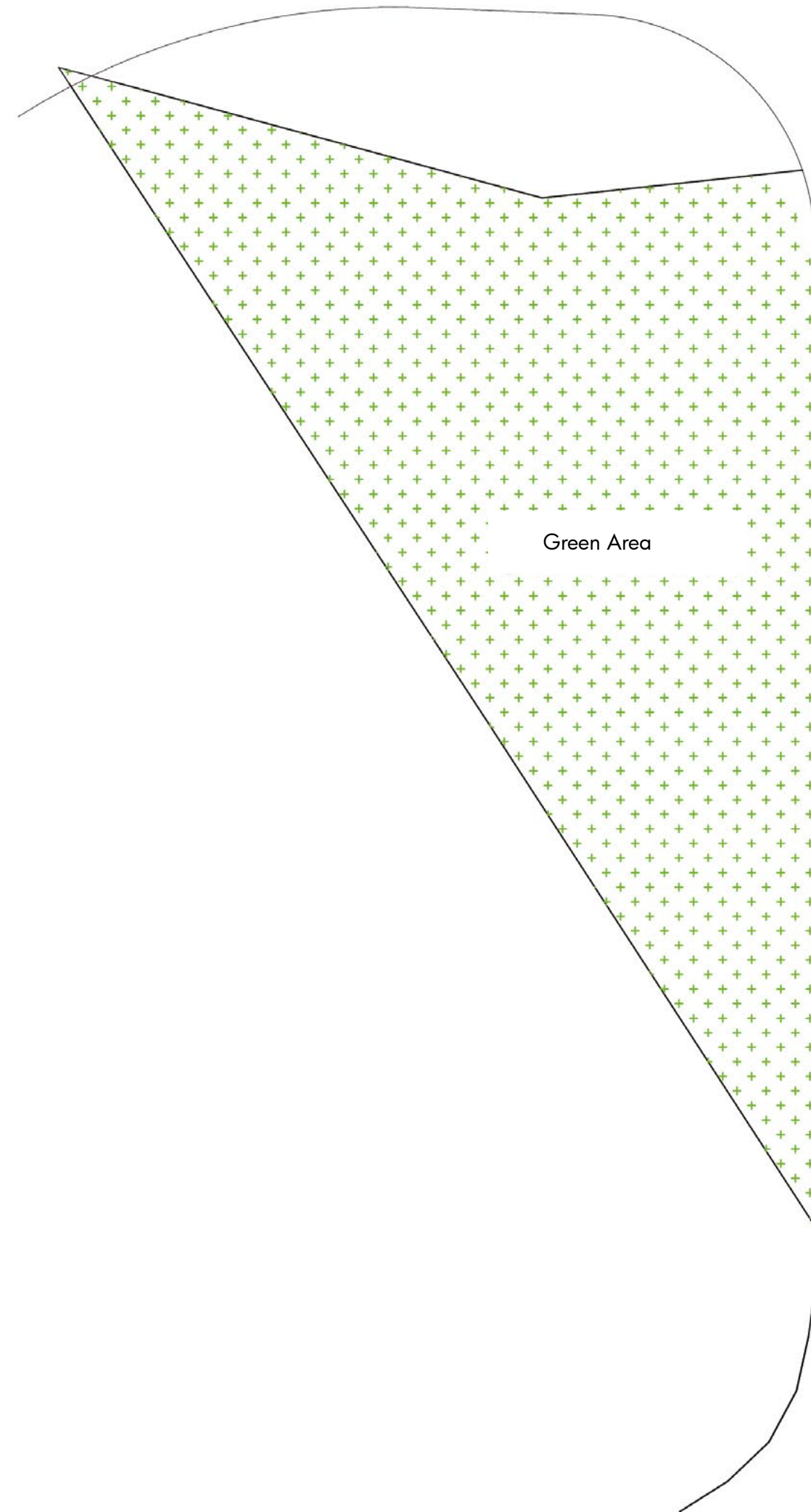
Block A

Block D

Block E

Block C

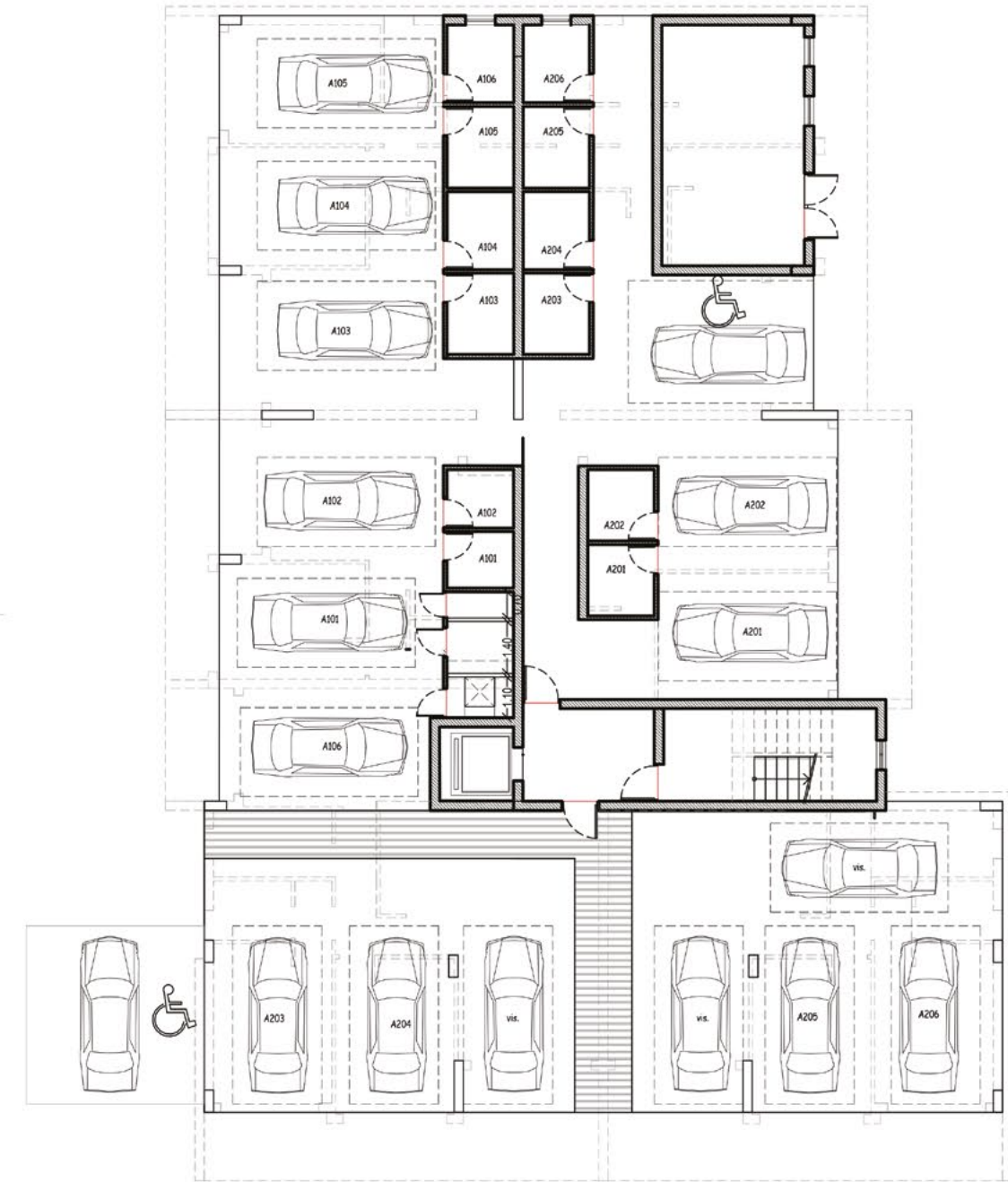
Block B



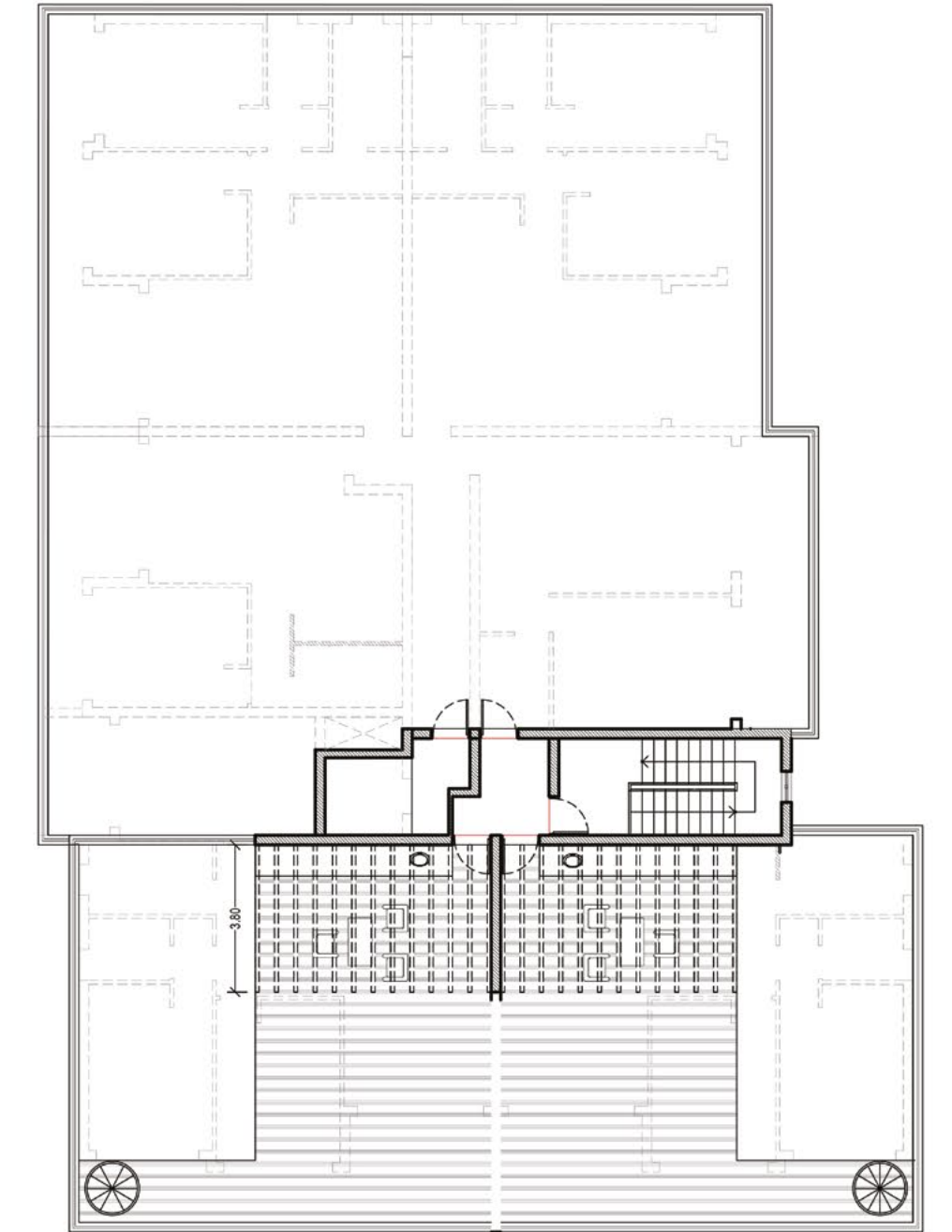
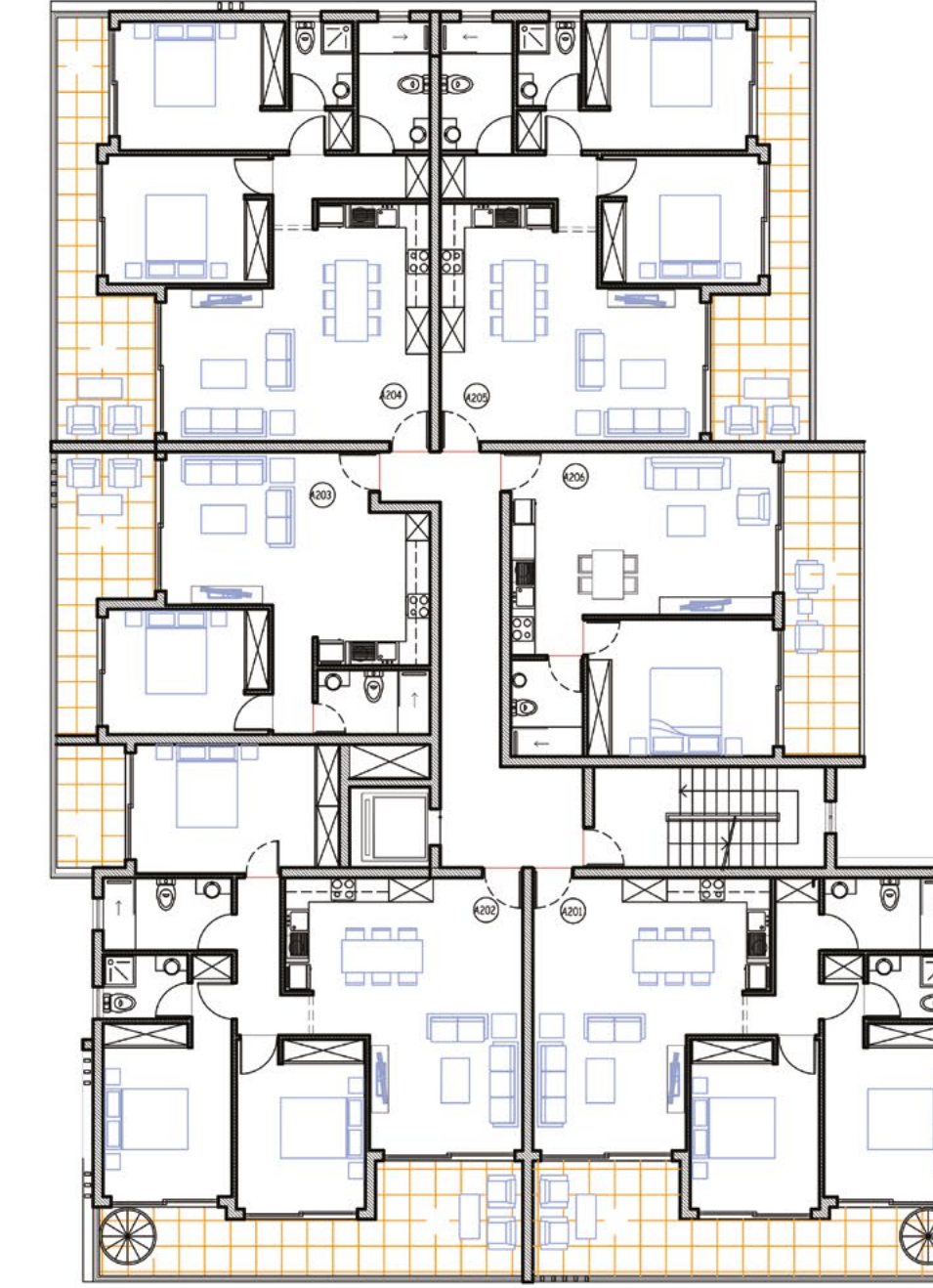
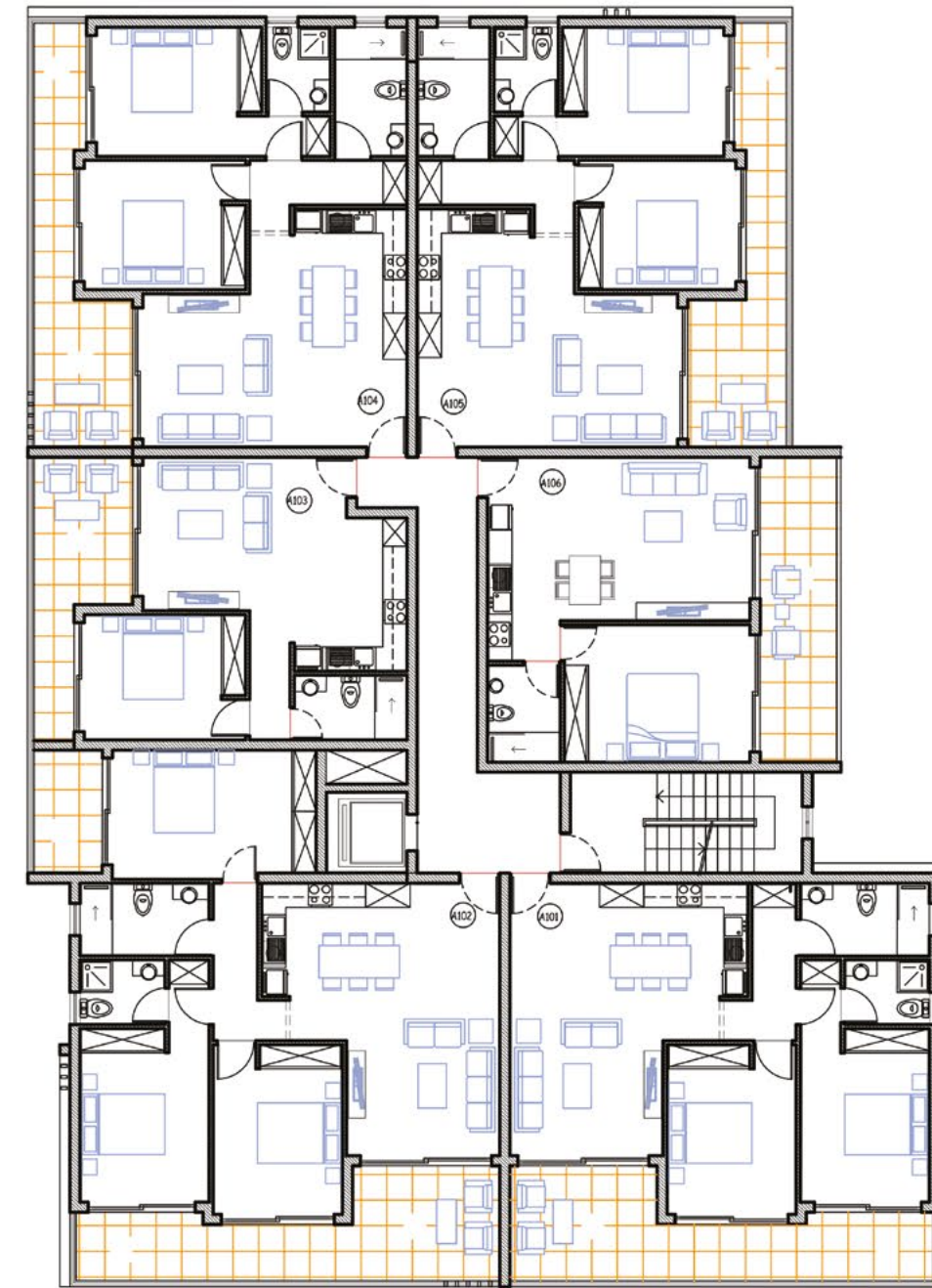
Public Road



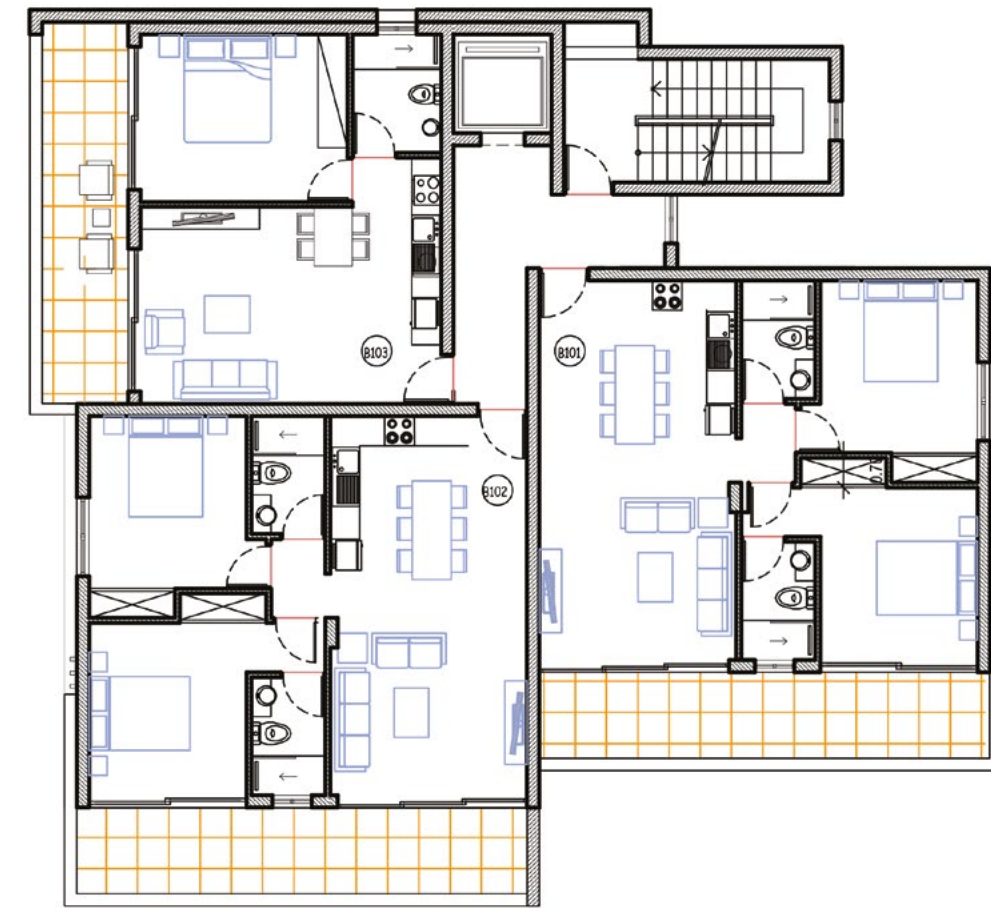
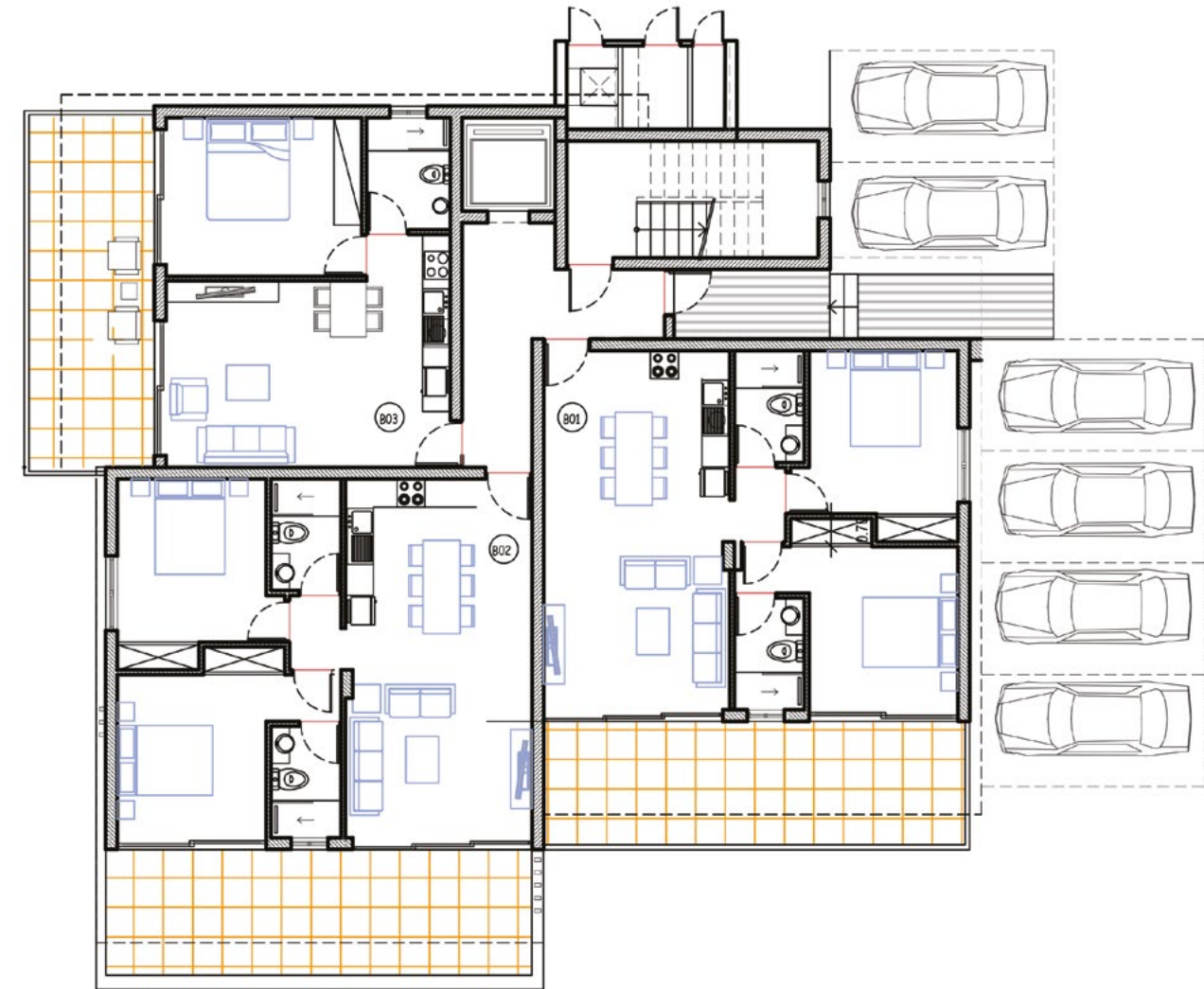
BLOCK A1



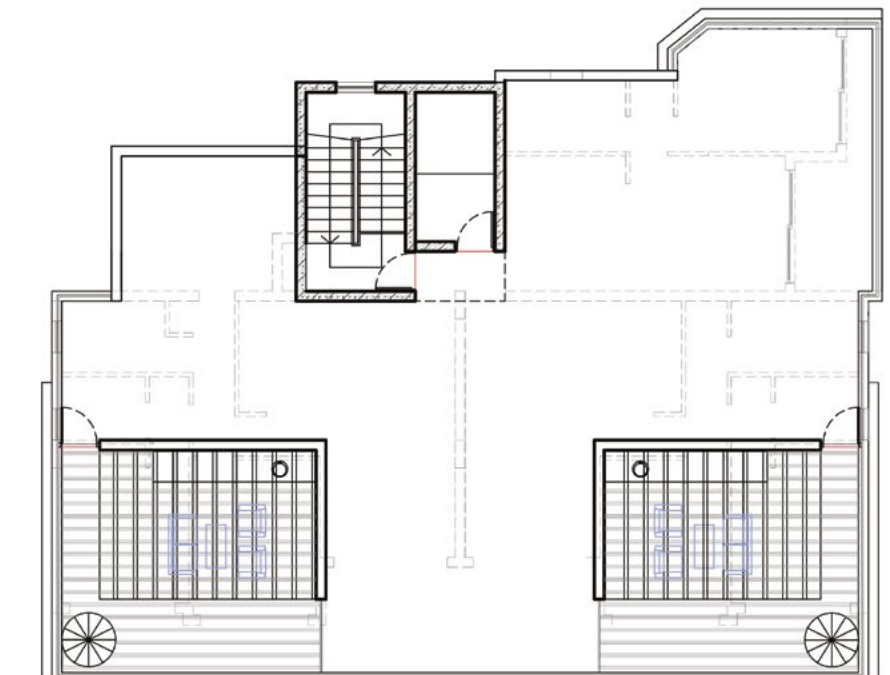
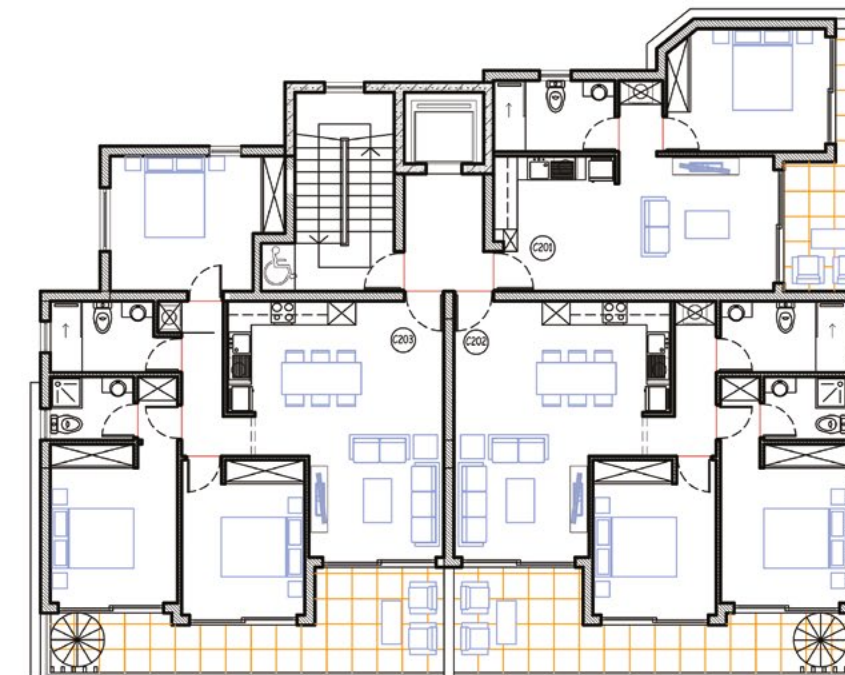
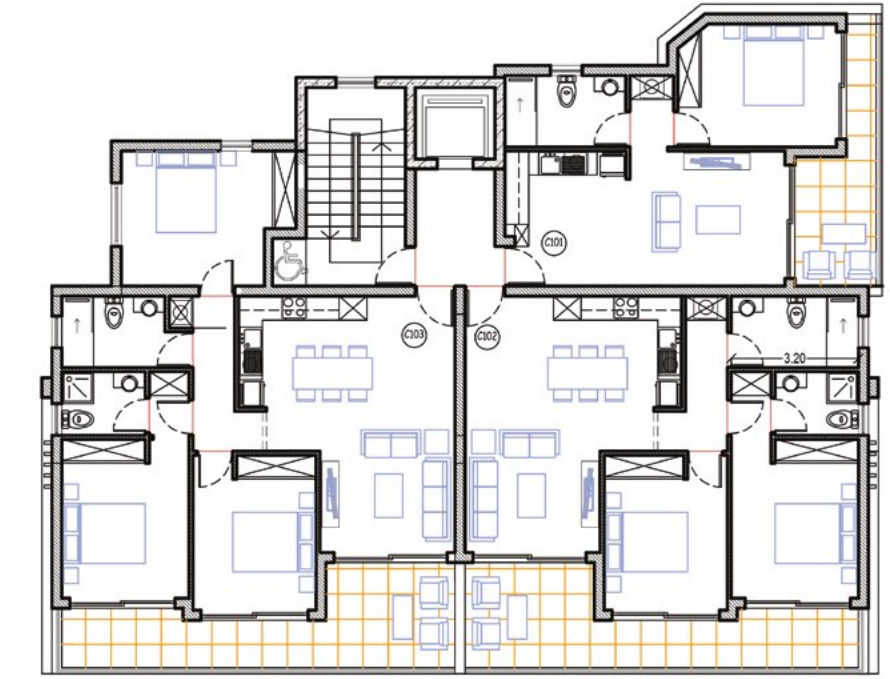
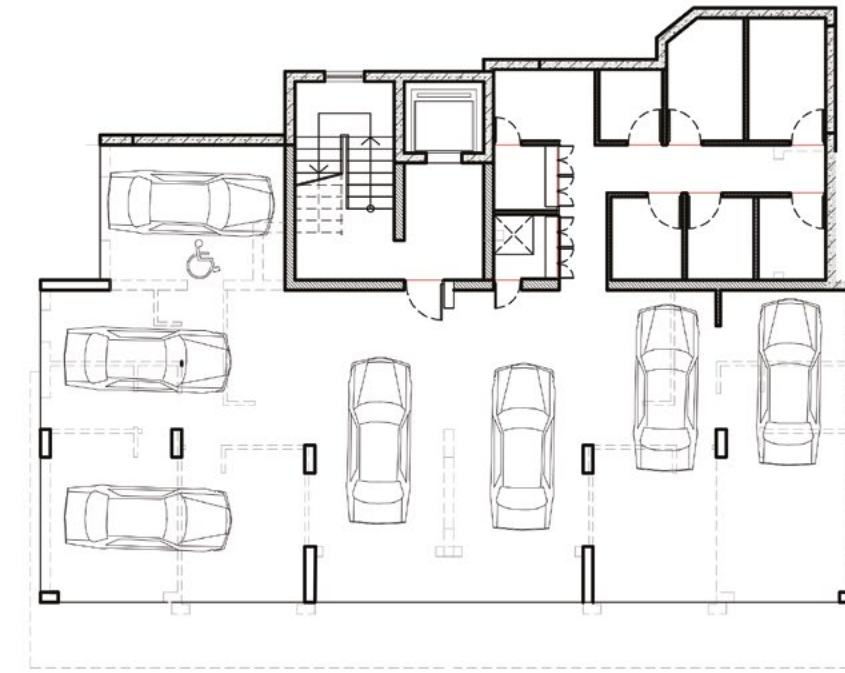
BLOCK A2



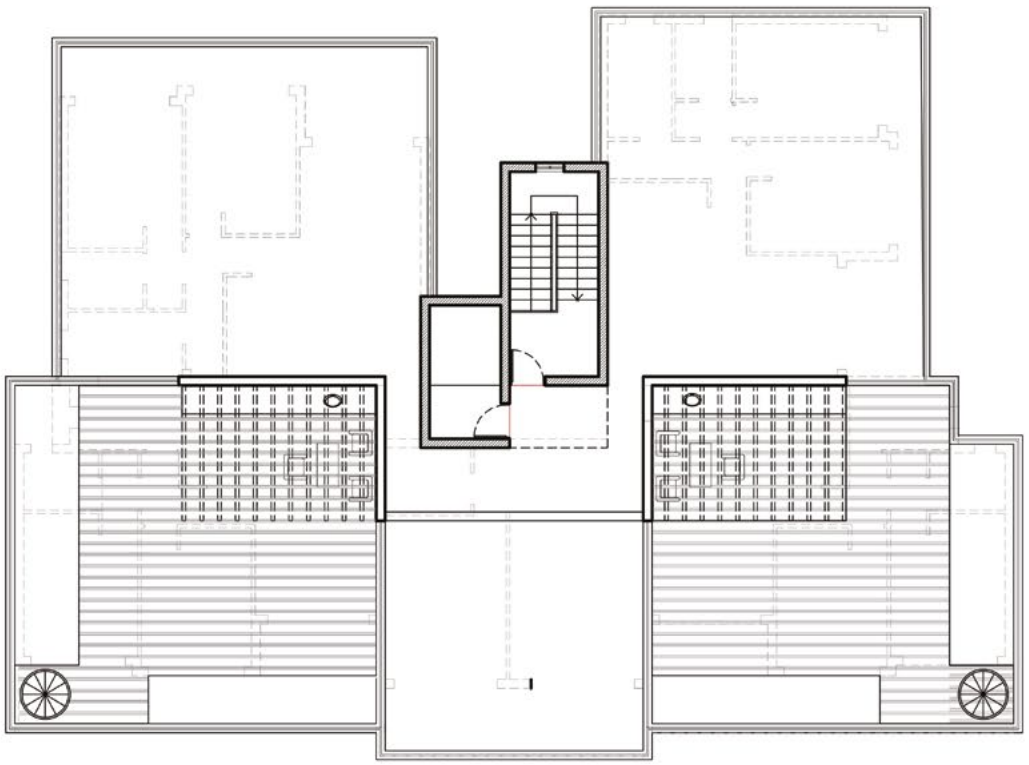
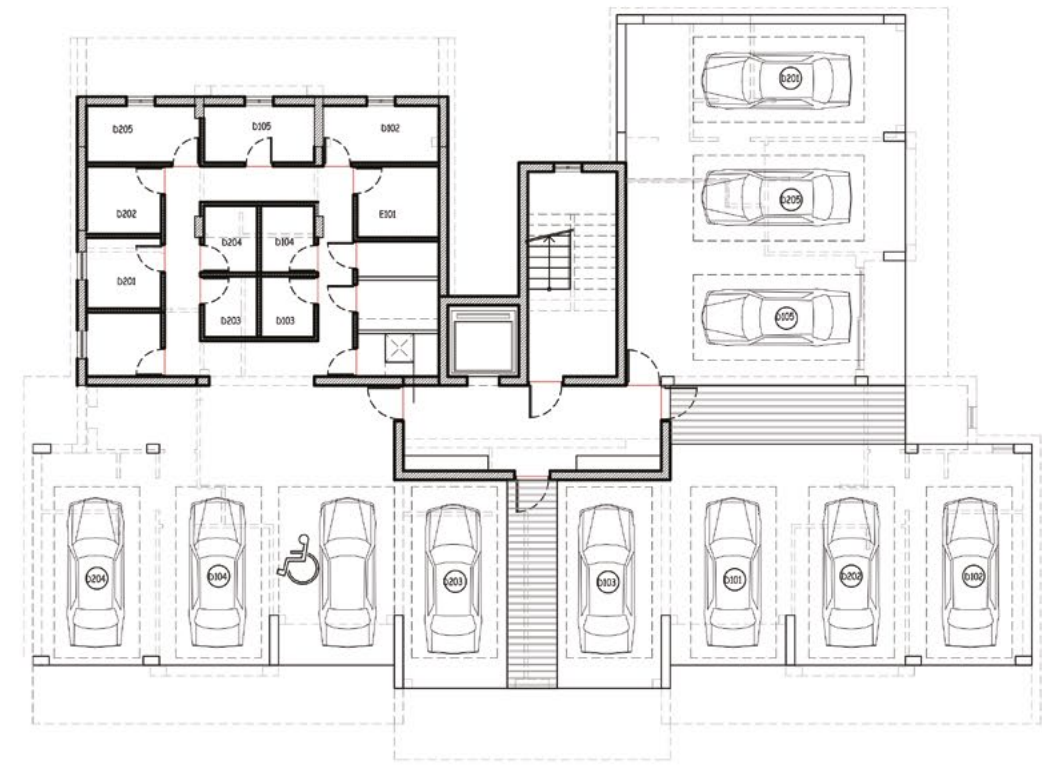
BLOCK B



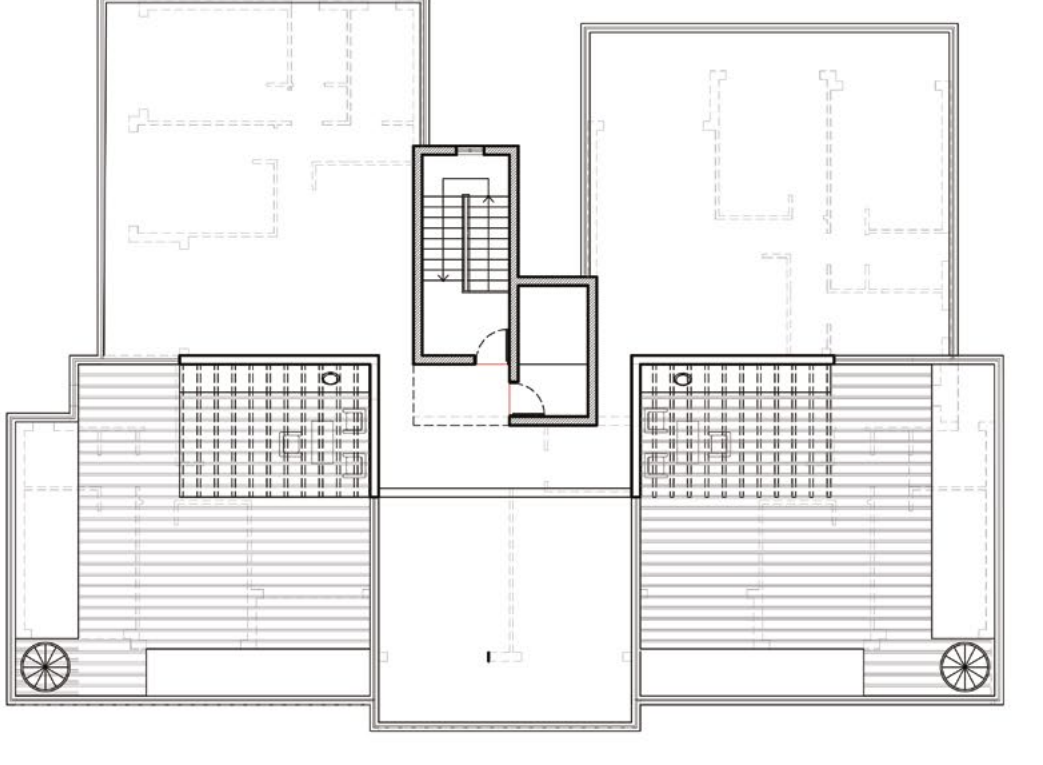
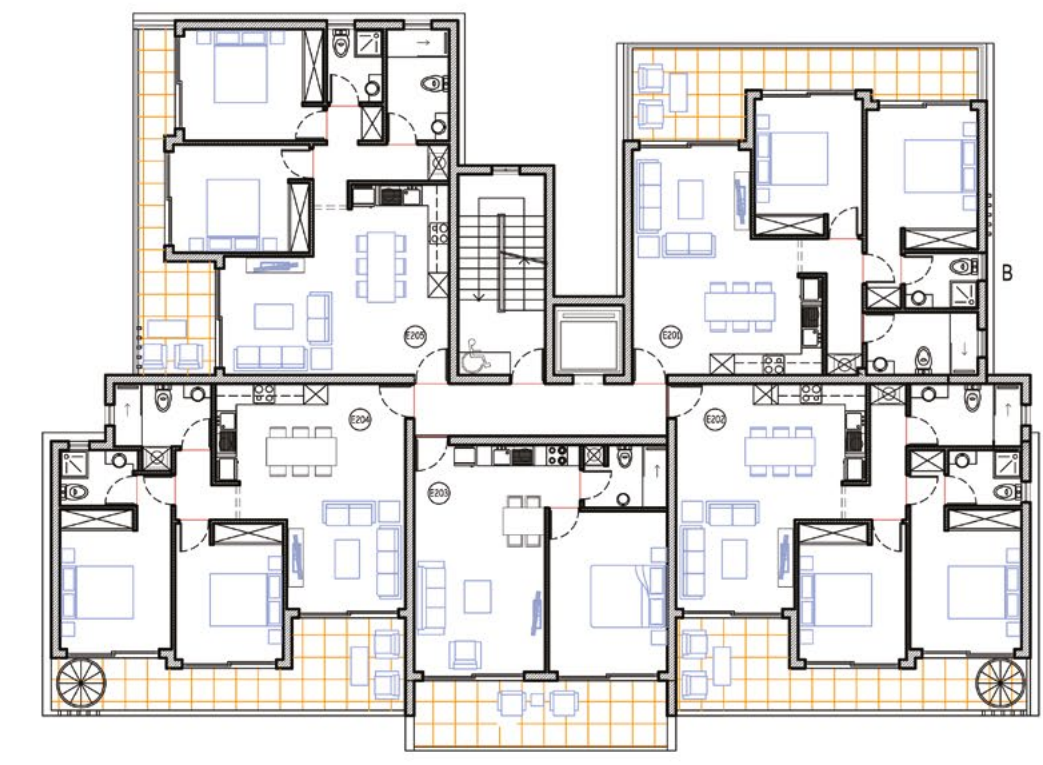
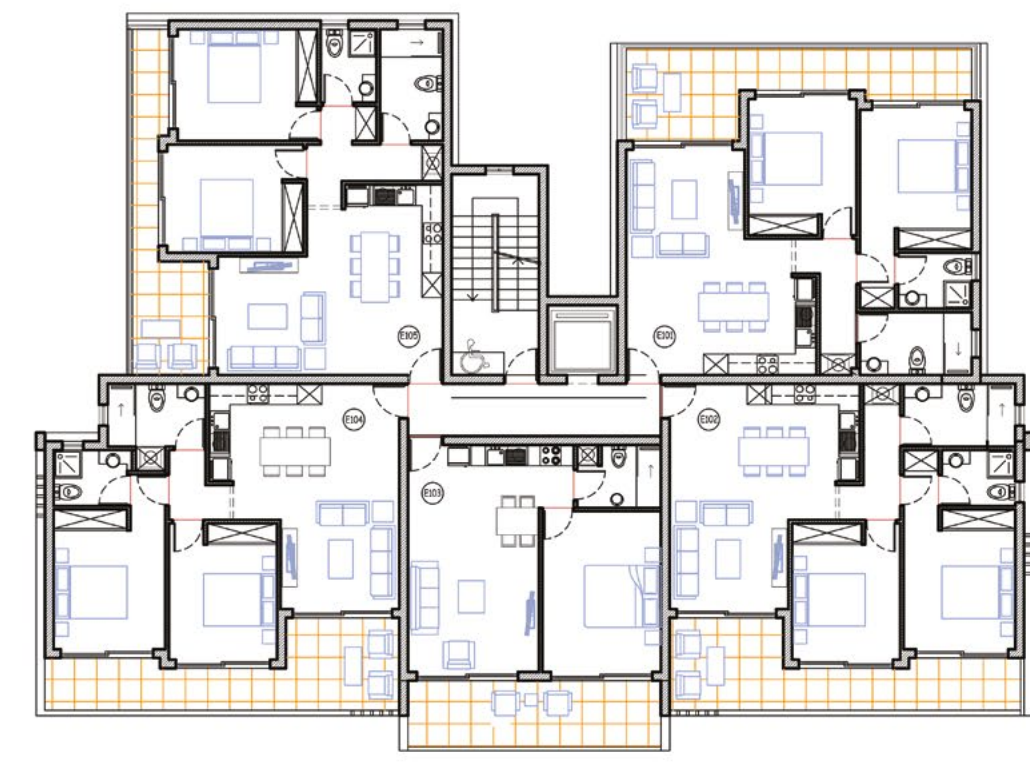
BLOCK C



BLOCK D



BLOCK E

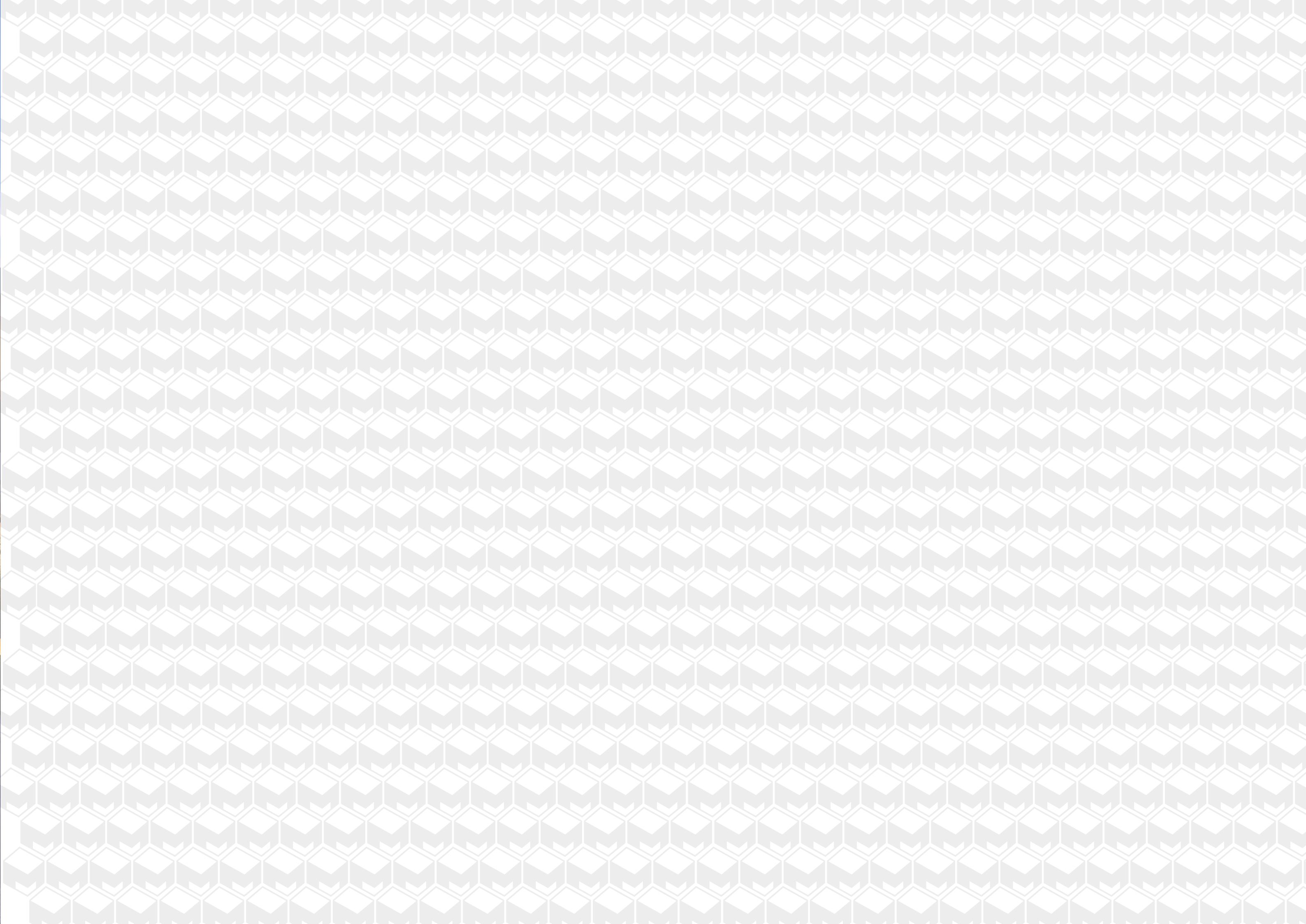




PROJECT DIMENSIONS

UNIT NO.	TYPE	BEDROOMS	BATHROOMS	PENTHOUSE	COVERED INTERNAL AREA m ²	COVERED VERANDA AREA m ²	TOTAL COVERED AREA m ²	PARKING	SWIMMING POOL
A101	BLOCK A	2	2	-	86	22	108	ALLOCATED	COMMUNAL
A102	BLOCK A	3	2	-	105	32,5	137,5	ALLOCATED	COMMUNAL
A103	BLOCK A	1	1	-	54	15	69	ALLOCATED	COMMUNAL
A104	BLOCK A	2	2	-	86	22	108	ALLOCATED	COMMUNAL
A105	BLOCK A	2	2	-	86	22	108	ALLOCATED	COMMUNAL
A106	BLOCK A	1	1	-	54	15	69	ALLOCATED	COMMUNAL
PH A201	BLOCK A	2	2	ROOFTOP TERRACE	86	22	108	ALLOCATED	COMMUNAL
PH A202	BLOCK A	3	2	ROOFTOP TERRACE	105	32,5	137,5	ALLOCATED	COMMUNAL
A203	BLOCK A	1	1	-	54	15	69	ALLOCATED	COMMUNAL
A204	BLOCK A	2	2	-	86	22	108	ALLOCATED	COMMUNAL
A205	BLOCK A	2	2	-	86	22	108	ALLOCATED	COMMUNAL
A206	BLOCK A	1	1	-	54	15	69	ALLOCATED	COMMUNAL
B01	BLOCK B	2	2	-	77	18	95	ALLOCATED	COMMUNAL
B02	BLOCK B	2	2	-	77	18	95	ALLOCATED	COMMUNAL
B03	BLOCK B	1	1	-	52	15	67	ALLOCATED	COMMUNAL
PH B101	BLOCK B	2	2	-	77	18	95	ALLOCATED	COMMUNAL
PH B102	BLOCK B	2	2	-	77	18	95	ALLOCATED	COMMUNAL
B103	BLOCK B	1	1	-	52	15	67	ALLOCATED	COMMUNAL
C101	BLOCK C	1	1	-	52	15	67	ALLOCATED	COMMUNAL
C102	BLOCK C	2	2	-	79	19	98	ALLOCATED	COMMUNAL
C103	BLOCK C	3	3	-	97	19	116	ALLOCATED	COMMUNAL
C201	BLOCK C	1	1	-	52	12	64	ALLOCATED	COMMUNAL

UNIT NO.	TYPE	BEDROOMS	BATHROOMS	PENTHOUSE	COVERED INTERNAL AREA m ²	COVERED VERANDA AREA m ²	TOTAL COVERED AREA m ²	PARKING	SWIMMING POOL
PH C202	BLOCK C	2	2	ROOFTOP TERRACE	79	19	98	ALLOCATED	COMMUNAL
PH C203	BLOCK C	3	2	ROOFTOP TERRACE	97	19	116	ALLOCATED	COMMUNAL
D101	BLOCK D	2	2	-	80	15	95	ALLOCATED	COMMUNAL
D102	BLOCK D	2	2	-	78	19,5	97,5	ALLOCATED	COMMUNAL
D103	BLOCK D	1	1	-	52	14,5	66,5	ALLOCATED	COMMUNAL
D104	BLOCK D	2	2	-	80	19,5	99,5	ALLOCATED	COMMUNAL
D105	BLOCK D	2	2	-	80	15	95	ALLOCATED	COMMUNAL
D201	BLOCK D	2	2	-	80	15	95	ALLOCATED	COMMUNAL
PH D202	BLOCK D	2	2	ROOFTOP TERRACE	78	19,5	97,5	ALLOCATED	COMMUNAL
PH D203	BLOCK D	1	1	ROOFTOP TERRACE	52	14,5	66,5	ALLOCATED	COMMUNAL
PH D204	BLOCK D	2	2	ROOFTOP TERRACE	80	19,5	99,5	ALLOCATED	COMMUNAL
D205	BLOCK D	2	2	-	80	20	100	ALLOCATED	COMMUNAL
E101	BLOCK E	2	2	-	80	20	100	ALLOCATED	COMMUNAL
E102	BLOCK E	2	2	-	80	19,5	99,5	ALLOCATED	COMMUNAL
E103	BLOCK E	1	1	-	52	14,5	66,5	ALLOCATED	COMMUNAL
E104	BLOCK E	2	2	-	78	19,5	97,5	ALLOCATED	COMMUNAL
E105	BLOCK E	2	2	-	80	15	95	ALLOCATED	COMMUNAL
E201	BLOCK E	2	2	-	80	20	100	ALLOCATED	COMMUNAL
PH E202	BLOCK E	2	2	ROOFTOP TERRACE	80	19,5	99,5	ALLOCATED	COMMUNAL
PH E203	BLOCK E	1	1	ROOFTOP TERRACE	52	14,5	66,5	ALLOCATED	COMMUNAL
PH E204	BLOCK E	2	2	ROOFTOP TERRACE	78	19,5	97,5	ALLOCATED	COMMUNAL
E205	BLOCK E	2	2	-	80	15	95	ALLOCATED	COMMUNAL



All visualisations of the projects are 3D-artistic renders. The final product may vary slightly

