

THE EDGE

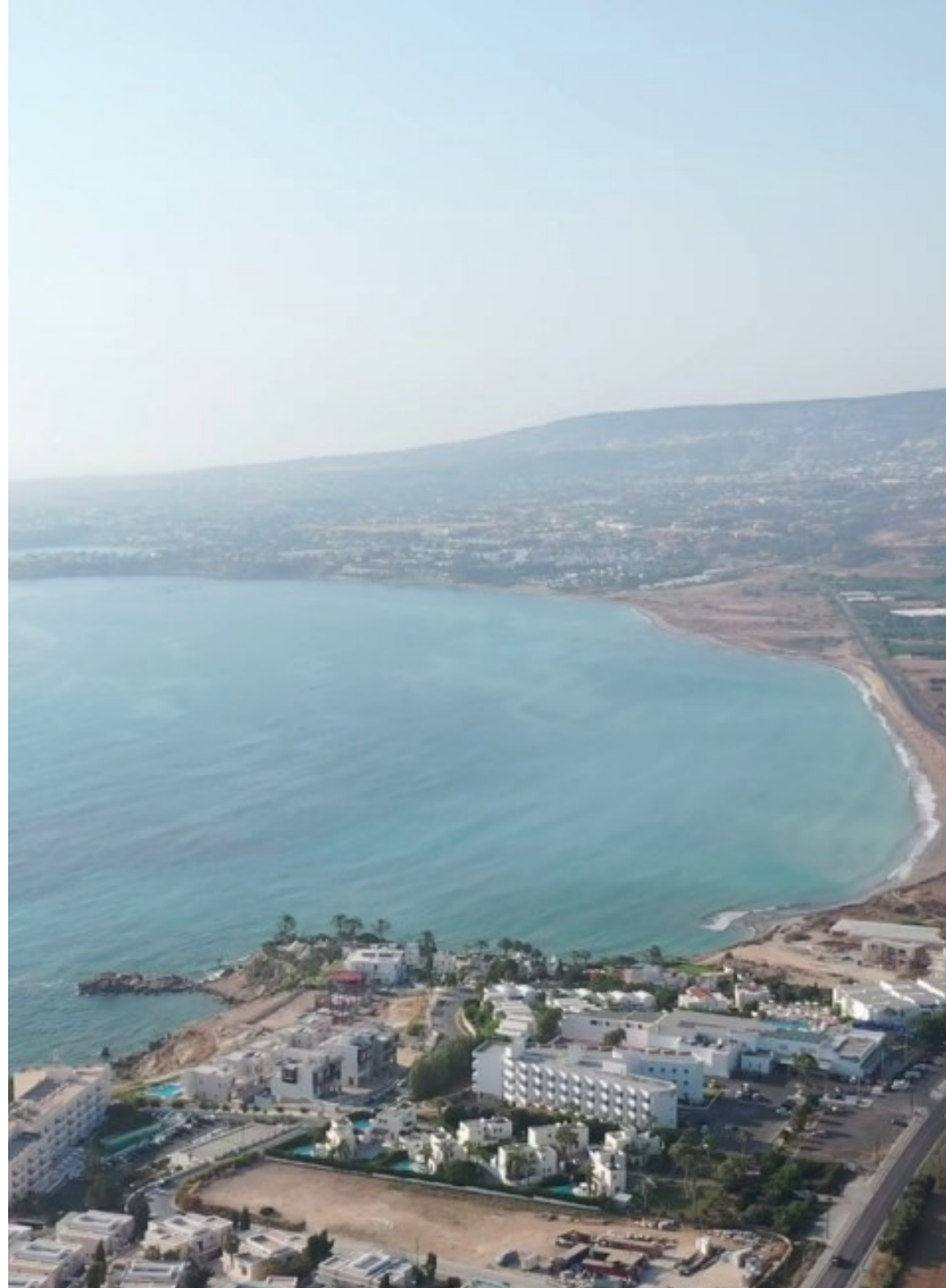


KISSONERGA

Kissonerga Village is situated west of the Paphos district three kilometres from the town. It is built at an average altitude of about 70 metres from the sea.

More specifically it is located in a valley with a view towards the horizon which is lost in the Mediterranean Sea. The village neighbours with the communities of Emba, Lemba and Chloraka. It is a place with beautiful beaches and intense opposites.

With old and modern buildings, natural environment and culture which combines Greece, Europe and Middle East with hotels, restaurants , bars , coffee shops as well as hospitable residents.",



THE EDGE

A unique residential project set in the sought-after location of Kisonerga, Pafos, offering unobstructed views of the sea. A fancy coastal development that elevates modern living with its architecture and well designed spaces.

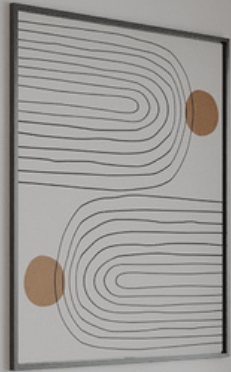
Consisting of four 1-bedroom and eight 2-bedroom apartments situated on the edge of a cliff offering stunning views of the sea. "The Edge" presents a collection of modern apartments thoughtfully designed to optimize this breathtaking view.

Experience the joy of living just a short distance away from the enchanting sea and Pafos charming harbor, while still enjoying easy access to all essential amenities. "The Edge" offers a perfect balance of serenity and convenience, ensuring that the people who live here have an easy and luxurious life.





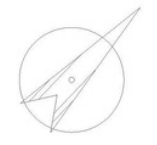
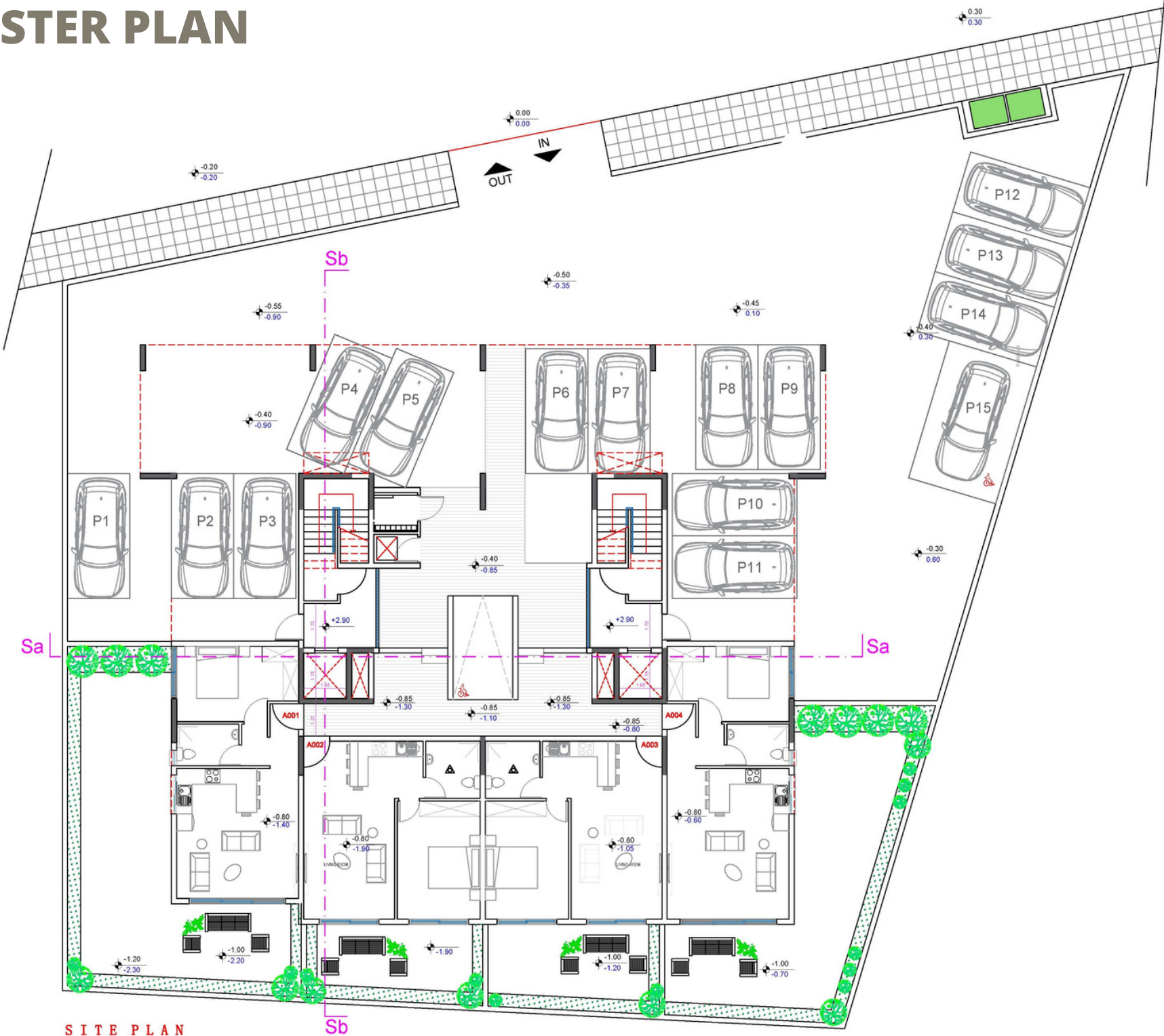








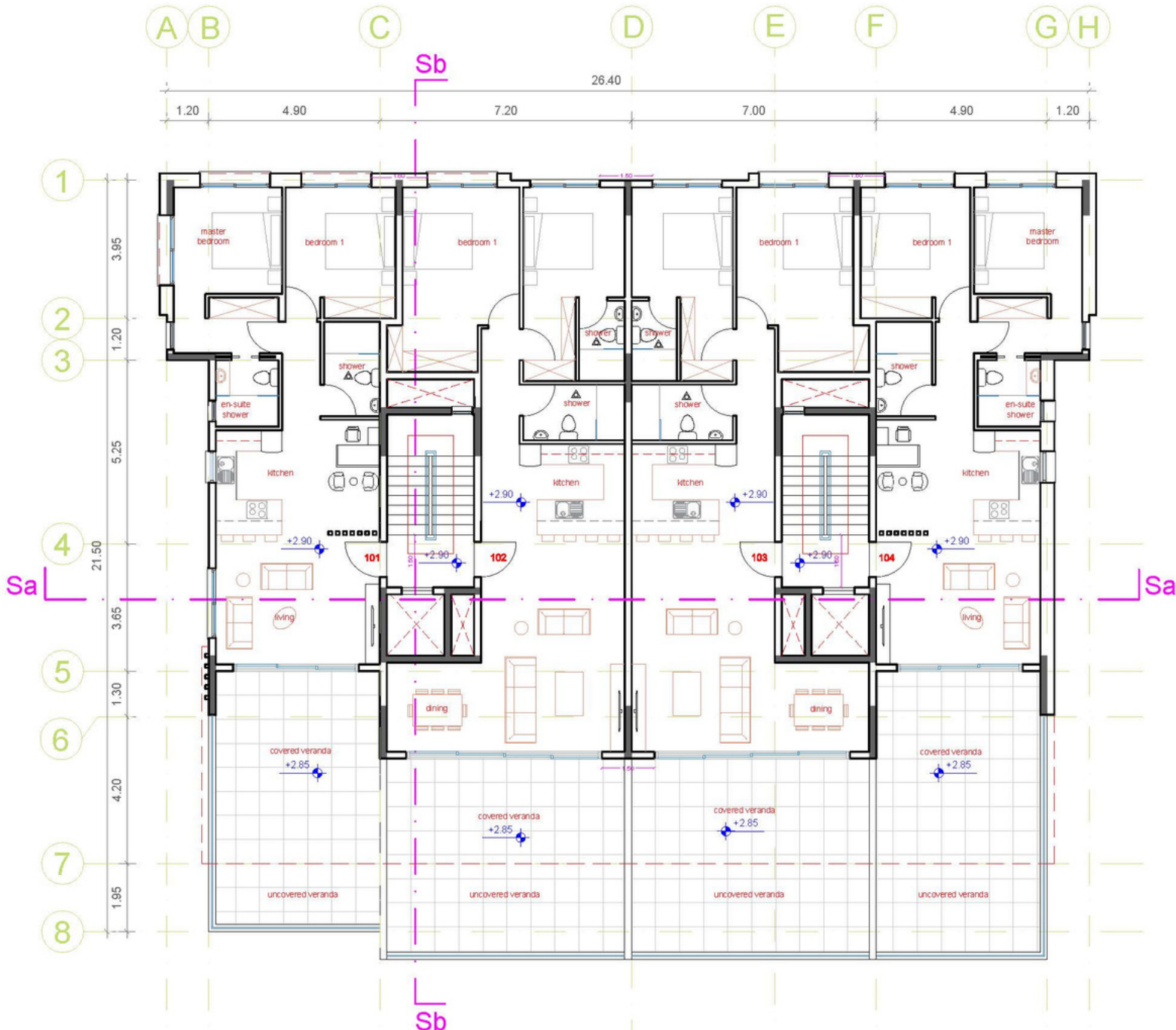
MASTER PLAN



SITE PLAN

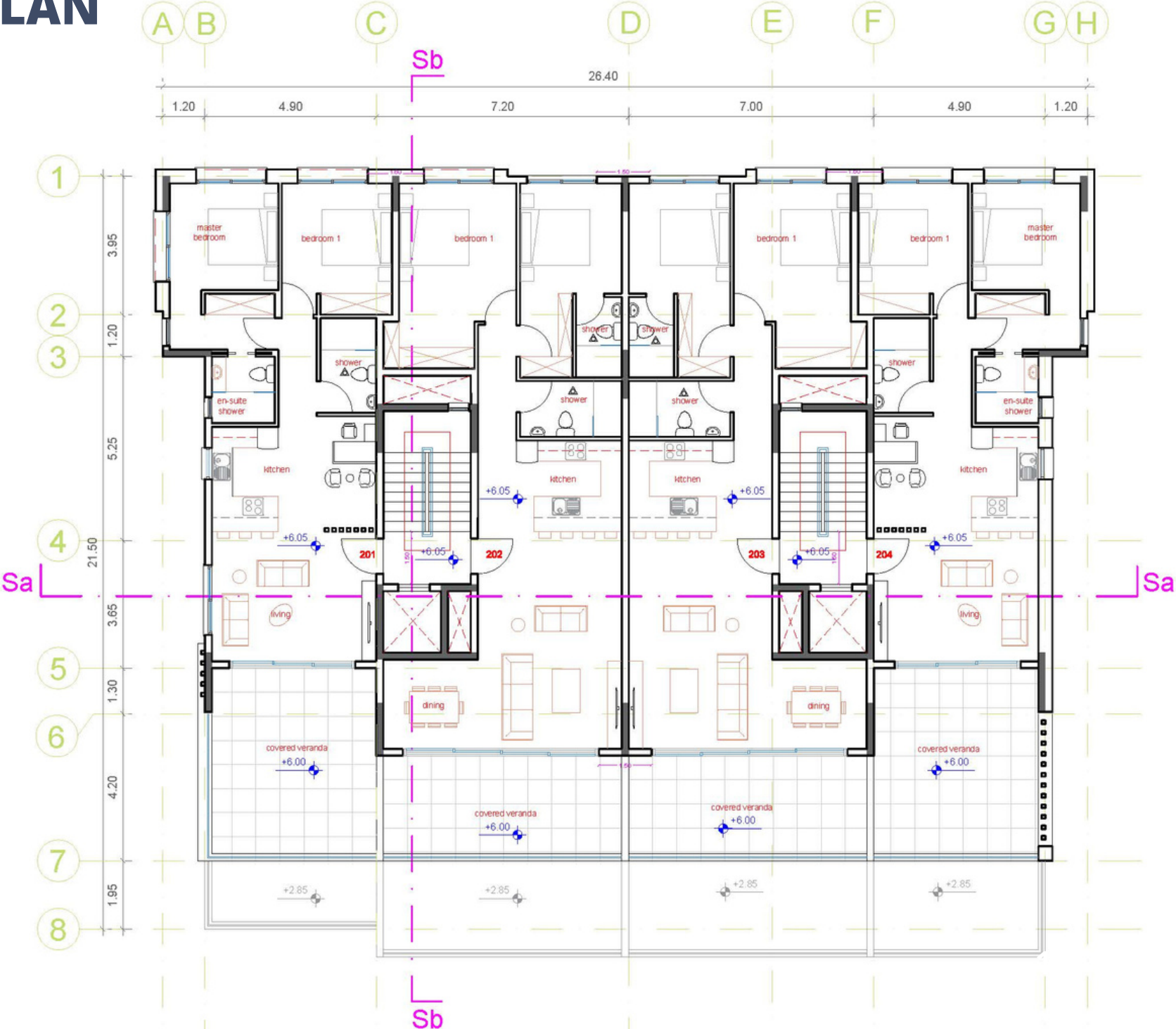
FLOOR PLAN

FIRST FLOOR



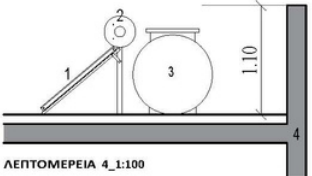
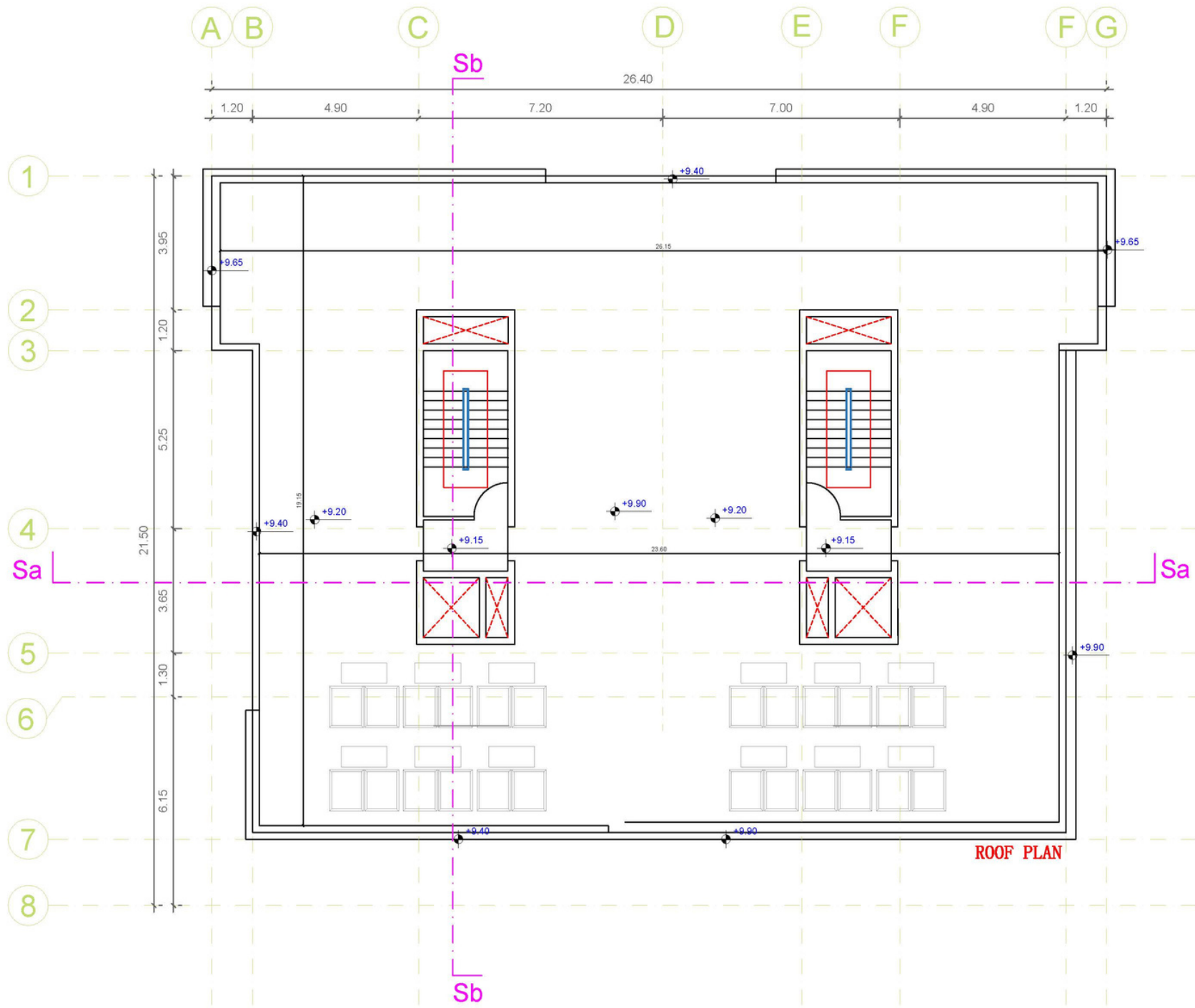
FLOOR PLAN

SECOND FLOOR



FLOOR PLAN

ROOF



ΛΕΙΤΟΜΕΡΕΙΑ 4_1:100

- 1. SOLAR PANEL
- 2. HOT WATER TANK
- 3. COLD WATER TANK
- 4. REINFORSED CONCRETE

LOCATION



CITY CENTER
1KM



BEACH
5KM



AIRPORT
15KM



RESTAURANT
2KM



SUPERMARKE
T 5KM



SCHOOL
7KM



GOLF
COURSE
10KM

THE EDGE

SPECIFICATIONS

- *4 x 1 - bedroom and 8 x 2 - bedroom apartments*
- *Contemporary Architectural Design*
- *Upgraded thermal aluminium series*
- *Tailor made kitchen design*
- *Wide range of imported ceramic tiles and marbles*
- *Branded sanitary ware*
- *Provisions for central heating and A/C*
- *Unobstructed Sea View*
- *Large verandas with sea and mountain views*
- *Energy efficiency class "A"*

