



FAIRVIEW GARDEN



LUXURY 3BED VILLAS

CYPRUS

Country at a glance

Capital City	Nicosia
Total area	9,251 sq km (of which 3,355 sq km are in north Cyprus)
Population	1,205,575 (July 2016 est.)
Borders	No land borders. It is an island nation.
Currency	Euro (EUR)
Climate	Temperate; Mediterranean with hot, dry summers and cool winters
Terrain	central Plain with mountains to north and south
Time Zone	EET (UTC+2)
Calling Code	+357
Drives on the	Left





CYPRUS

a beautiful island
with rich history
and culture

- Full member of the European Union
- Major tourist destination in the Mediterranean
- Strategic location: crossroads of three continents (Africa, Asia and Europe)
- Cosmopolitan lifestyle
- Cultural diversity
- Modern healthcare facilities and centres
- Pleasant Mediterranean climate
- Rich in culture and history
- English widely spoken
- Blue flag awarded beaches
- Outdoor activities for all seasons
- Picturesque villages and mountains with pine forests
- Exquisite Mediterranean cuisine



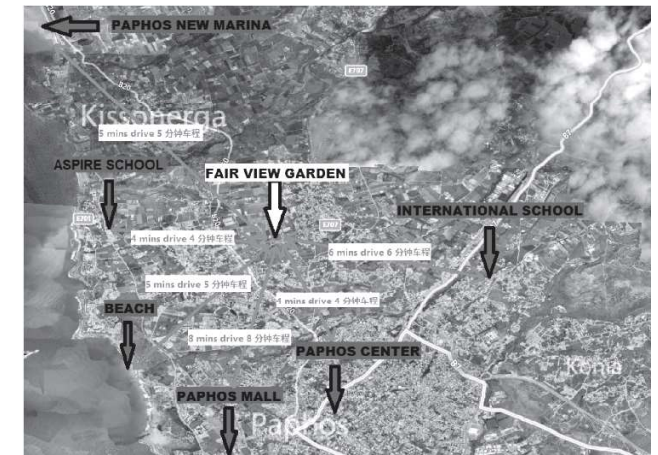


FAIRVIEW GARDEN

Great Location

/ CHLORAKA CENTRAL LOCATION

- 4 mins drive to Paphos centre and to the beach,
7 mins drive to the International School and the Mall,
5 mins drive to the new Marina!
- Peaceful residential area!
- Walking distance to amenities!
- Spacious living areas and verandas!
- Roof gardens - Picturesque mountain and sea views!



CHLORAKA CENTRAL LOCATION

TRAVEL TIMES (BY CAR)





FAIRVIEW GARDEN



QUALITY & LUXURY SPECIFICATIONS

HOT WATER

Quality solar-heated hot water supply to kitchen, all bathrooms and washrooms.

PLUMBING SYSTEM

Pipe in pipe gives 100% security against leaks and makes for easy repairs.

EXTERNAL DOORS and WINDOWS

Double glazed sliding anodized Aluminium.

DOORS

Entrance doors are made of either high quality solid wood or Alloy.

Internal doors

Flush fitted doors made of MDF in plastic paint.

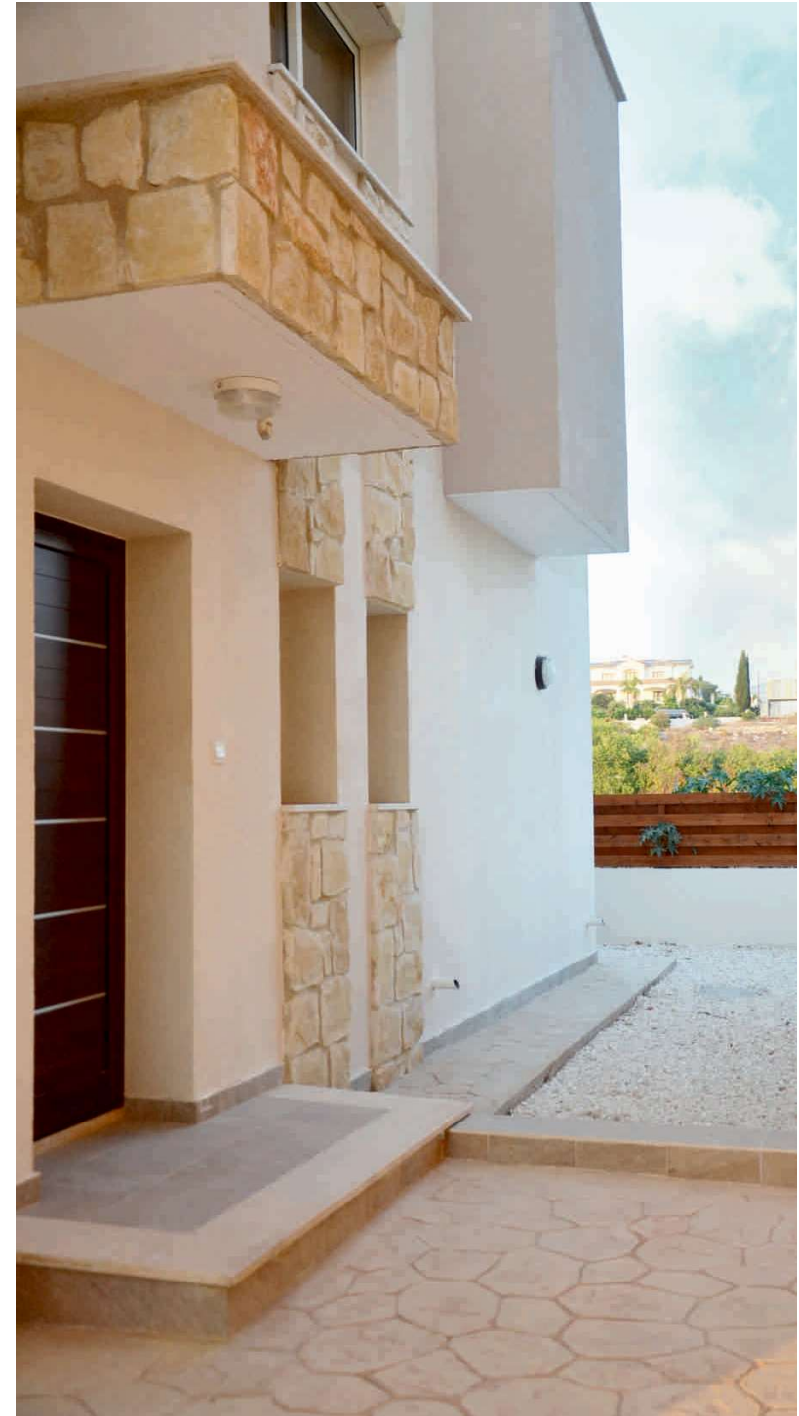
WARDROBES and KITCHEN UNITS

Constructed of MDF painted in plastic paint with internal hanging clothes rails, shelves, and drawers. Wardrobes are twin-level. Granite worktop.

HEATING and COOLING

Includes provision for installation of Air Conditioning / Heating units in all rooms (Piping-wiring). Provision for central heater.

Ground and Upper level floor insulation.
Roof Insulation.





FAIRVIEW GARDEN

PANORAMIC
MOUNTAIN AND SEA VIEW

"PEACEFUL LOCATION WITH BREATHTAKING VIEWS,
IDEAL FOR YOUR PERMANENT HOME"





FRAMEWORK

Raft Foundation for best protection against earthquakes.

WALLS and PARTITIONS

Bricks with 5cm polystyrene.

Internal: Smooth plaster finish and three coats of emulsion.

External: Sand-cement plaster and smooth plaster finish and three coats of Paint.

FLOORING:

High-Quality-Ceramic Tiles.

WALL TILES

Kitchen: between worktop and wall unit.

Bathrooms: to three quarter level.

SANITARY FITTINGS

White sanitary fittings.

ELECTRICAL INSTALLATION

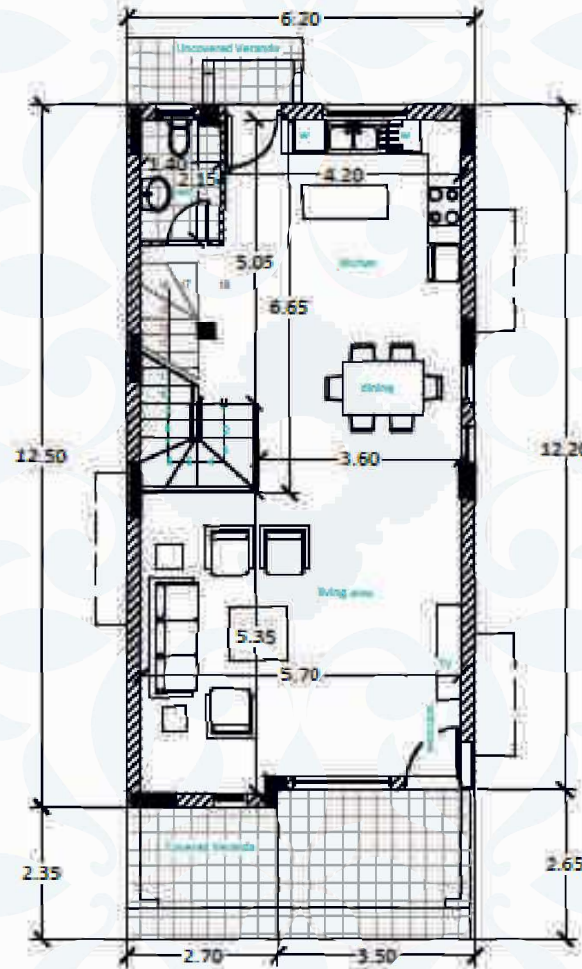
T.V @ telephone points in all rooms.

Provision for ISDN telephone line.

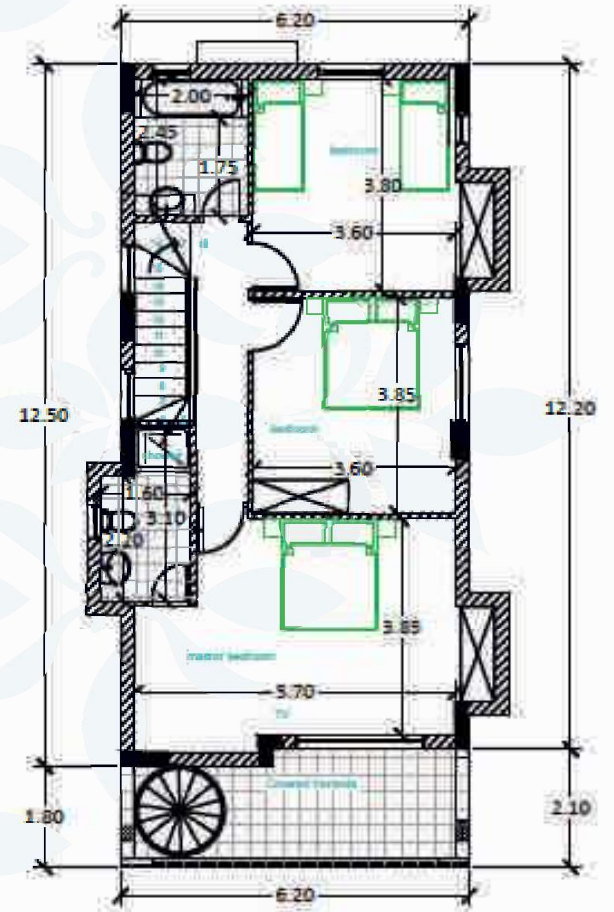
4-6 Electrical sockets in each room.

PLANS & TYPES

TYPE MODERN B2 3 BED



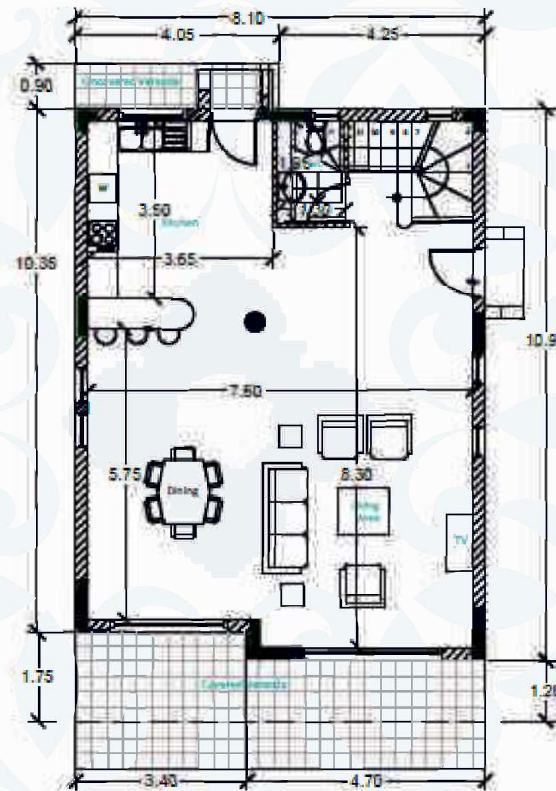
GROUND FLOOR



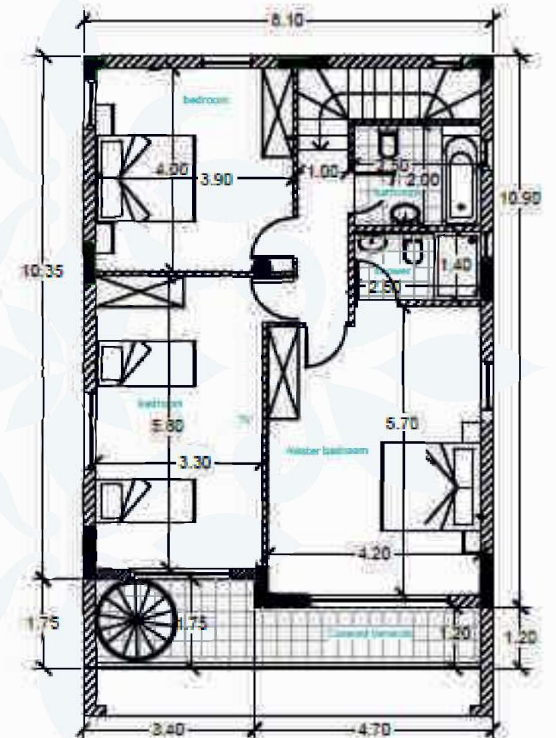
FIRST FLOOR

PLANS & TYPES

TYPE MODERN D2 3 BED



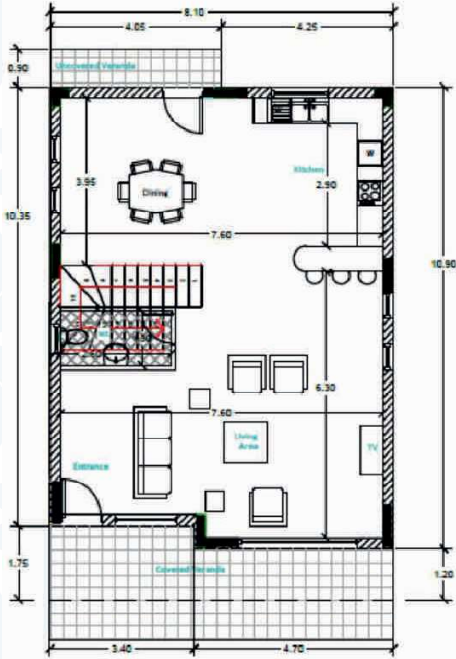
GROUND FLOOR



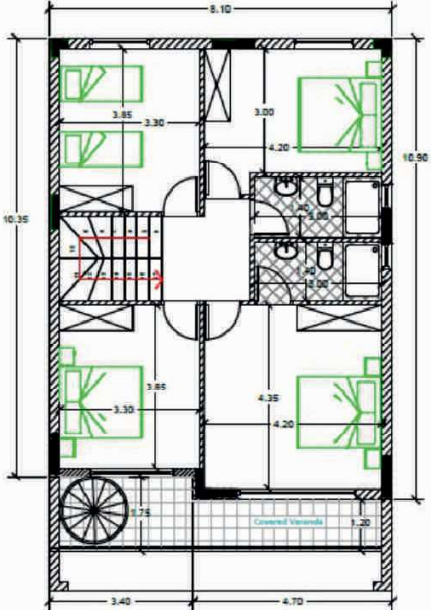
FIRST FLOOR

PLANS & TYPES

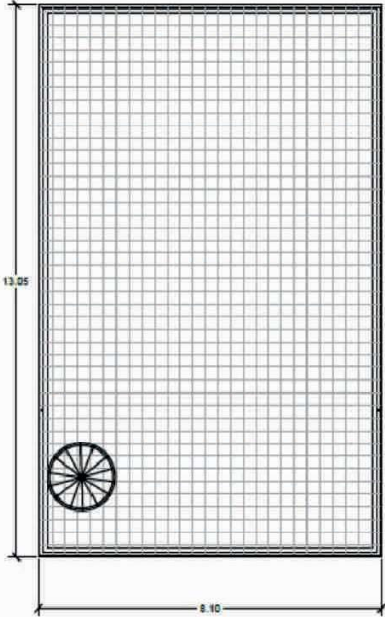
OPTION A TYPE MODERN D2 4 BED



GROUND FLOOR



FIRST FLOOR

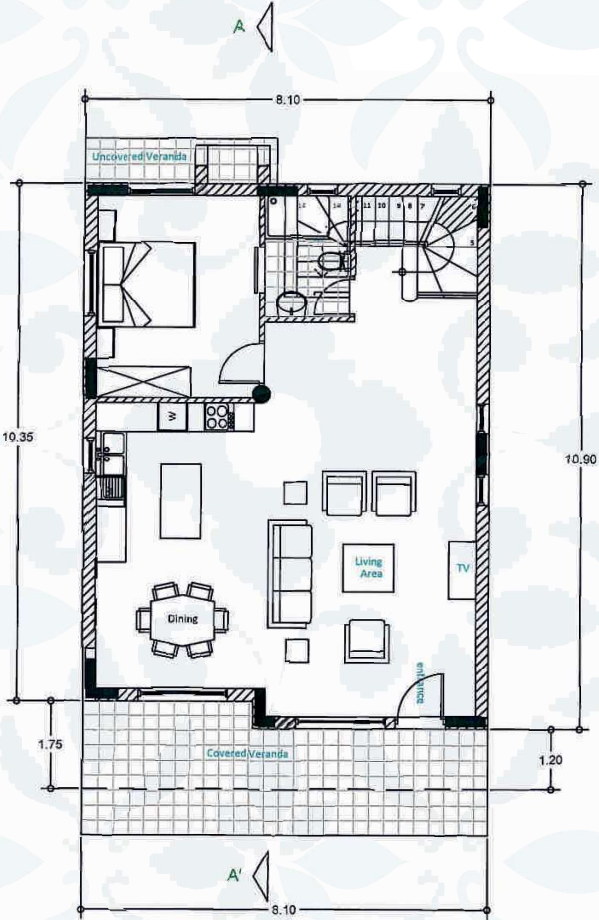


ROOF GARDEN

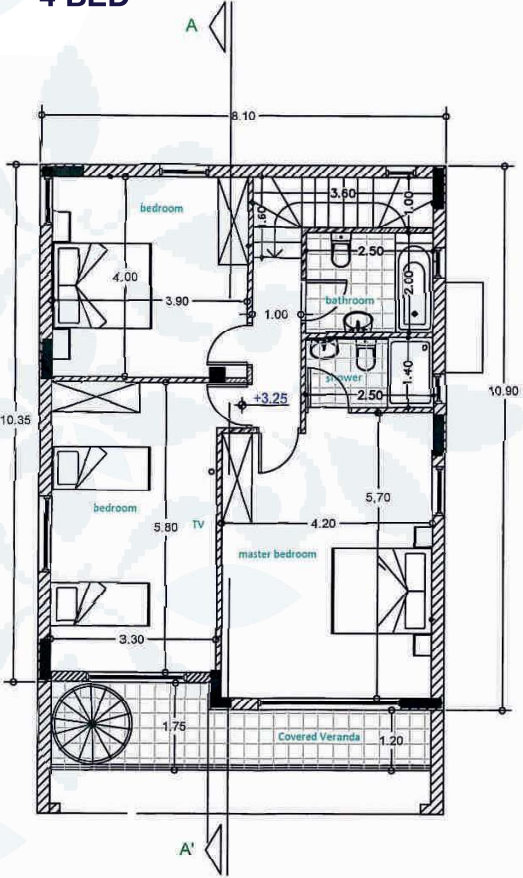
PLANS & TYPES

OPTION B

TYPE MODERN D2 4 BED



GROUND FLOOR



FIRST FLOOR